

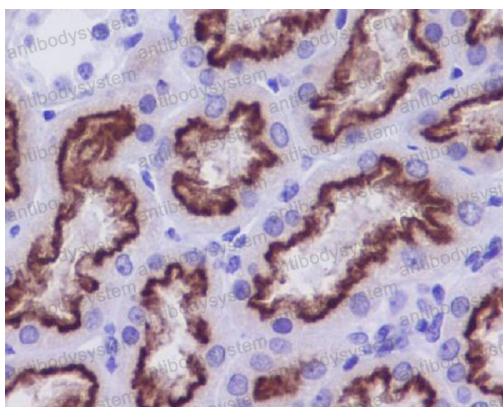
Anti-CUBN/Cubilin Antibody (R1A16)

Summary

Catalog No.	RHA92502
Clone ID	R1A16
Host species	Rabbit
Tested applications	IHC: 1:100-1:200, WB: 1:1000-1:2000
Species reactivity	Human
Form	Liquid
Storage buffer	0.01M PBS, pH 7.4, 0.05% BSA, 50% Glycerol, 0.05% Sodium azide.
Concentration	1 mg/ml
Purity	>95% by SDS-PAGE.
Clonality	Monoclonal
Isotype	IgG
Applications	IHC, WB
Target	Cubilin, Cubn, IFCR, MGA1, Cubilin precursor, megaloblastic anemia 1, Cubilin
Purification	Protein A/G purified from cell culture supernatant.
Endotoxin level	Please contact with the lab for this information.
Accession	O60494
Stability and Storage	Use a manual defrost freezer and avoid repeated freeze-thaw cycles. Store at +4 °C short term (1-2 weeks). Store at -20 °C 12 months. Store at -80 °C long term.

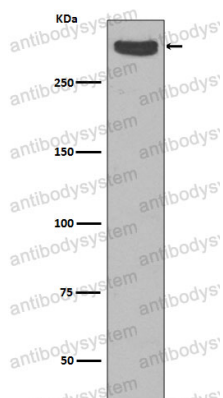
Note For research use only.

Data Image



Immunohistochemical

Immunohistochemical analysis of paraffin-embedded human kidney, using Cubilin Antibody.



Western blot

Western blot analysis of Cubilin expression in Human fetal kidney lysate.