

# Anti-KIFC1 Antibody (R1A12)

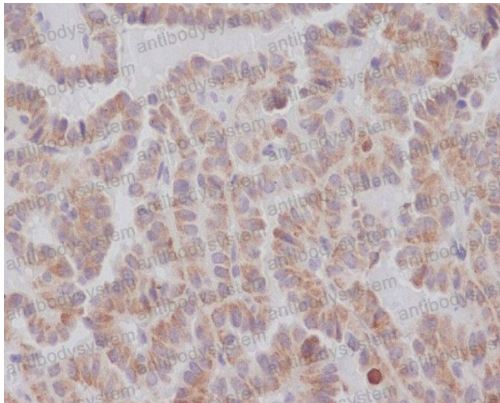
## Summary

---

<b>Catalog No.</b>	RHN59101
<b>Clone ID</b>	R1A12
<b>Host species</b>	Rabbit
<b>Tested applications</b>	IF: 1:50-1:200, IHC: 1:100-1:200, IP: 1:20-1:50, WB: 1:1000-1:2000
<b>Species reactivity</b>	Human
<b>Form</b>	Liquid
<b>Storage buffer</b>	0.01M PBS, pH 7.4, 0.05% BSA, 50% Glycerol, 0.05% Sodium azide.
<b>Concentration</b>	1 mg/ml
<b>Purity</b>	>95% by SDS-PAGE.
<b>Clonality</b>	Monoclonal
<b>Isotype</b>	IgG
<b>Applications</b>	IF, IHC, IP, WB
<b>Target</b>	HSET, HSET KNSL2, KIFC1, Kinesin family member C1, KNSL2, MKLP2, RAB6 KIFL, Rabkinesin 6, KIFC1
<b>Purification</b>	Protein A/G purified from cell culture supernatant.
<b>Endotoxin level</b>	Please contact with the lab for this information.
<b>Accession</b>	Q9BW19
<b>Stability and Storage</b>	Use a manual defrost freezer and avoid repeated freeze-thaw cycles. Store at +4 °C short term (1-2 weeks). Store at -20 °C 12 months. Store at -80 °C long term.

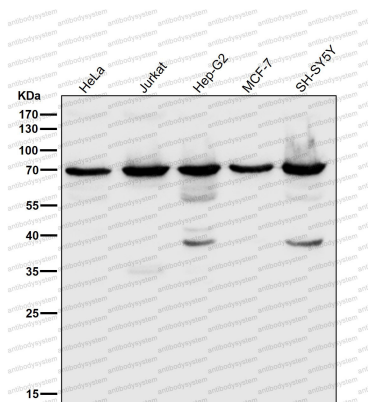
**Note** For research use only.

## Data Image



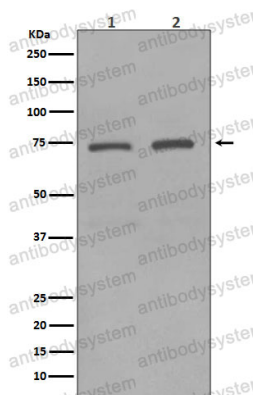
Immunohistochemical

Immunohistochemical analysis of paraffin-embedded human thyroid carcinoma, using KIFC1 Antibody.



Western blot

All lanes use the Antibody at 1:2K dilution for 1 hour at room temperature.



Western blot

Western blot analysis of KIFC1 expression in (1) HeLa cell lysate; (2) HepG2 cell lysate.