

Recombinant Human GPER1 Protein, N-His-KSI

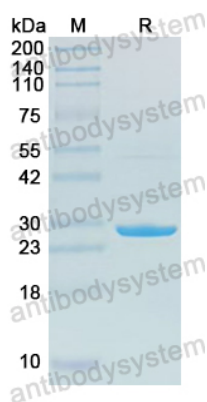
Summary

Catalog No.	YHN58601
Alternative Names	LYGPR, IL8-related receptor DRY12, FEG-1, Chemoattractant receptor-like 2, Flow-induced endothelial G-protein coupled receptor 1, G-protein coupled receptor 30, GPER, G-protein coupled estrogen receptor 1, GPER1, G protein-coupled estrogen receptor 1, mER, CEPR, GPR30, Membrane estrogen receptor, Lymphocyte-derived G-protein coupled receptor, DRY12, GPCR-Br, CMKRL2
Form	Lyophilized
Storage buffer	Lyophilized from a solution in PBS pH 7.4, 1mM EDTA, 4% Trehalose, 1% Mannitol.
Purity	>90% as determined by SDS-PAGE.
Applications	ELISA, Immunogen, SDS-PAGE, WB, Bioactivity testing in progress
Endotoxin level	Please contact with the lab for this information.
Expression system	E. coli
Accession	Q99527
Protein length	[Asp2-Ser62] & [Gly328-Val375]
Nature	Recombinant
Predicted molecular weight	27.65 kDa
Stability and Storage	Use a manual defrost freezer and avoid repeated freeze thaw cycles. Store at 2 to 8°C for one week. Store at -20 to -80°C for twelve months from the date of receipt.
Reconstitution	Reconstitute in sterile water for a stock solution.

Recombinant Proteins & Antibodies

Species	Homo sapiens (Human)
Shipping	In general, proteins are provided as lyophilized powder/frozen liquid. They are shipped out with dry ice/blue ice unless customers require otherwise.
Note	For research use only.

Data Image



SDS-PAGE

SDS-PAGE for Recombinant Human GPER1 Protein