

# Recombinant Human ADAM28 Protein, C-His (Active)

## Summary

---

<b>Catalog No.</b>	AHJ79001
<b>Alternative Names</b>	MDCL, MDC-L, Epididymal metalloproteinase-like, disintegrin-like, and cysteine-rich protein II, Metalloproteinase-like, disintegrin-like, and cysteine-rich protein L, ADAM 28, ADAM28, eMDC II, ADAM23, Disintegrin and metalloproteinase domain-containing protein 28
<b>Form</b>	Lyophilized
<b>Storage buffer</b>	Lyophilized from a solution in PBS pH 7.4
<b>Purity</b>	>90% as determined by SDS-PAGE.
<b>Applications</b>	Bioactivity, ELISA, Immunogen, SDS-PAGE, WB
<b>Biological activity</b>	Measured by its ability of the immobilized protein to support the adhesion of human acute T cell leukemia cells (Jurkat). The ED50 for this effect is 0.250-2.50 µg/mL.
<b>Endotoxin level</b>	<0.1 EU/µg of the protein by the LAL method.
<b>Expression system</b>	Mammalian Cells
<b>Accession</b>	Q9UKQ2
<b>Protein length</b>	Leu72-Ala623
<b>Nature</b>	Recombinant
<b>Stability and Storage</b>	Use a manual defrost freezer and avoid repeated freeze thaw cycles. Store at 2 to 8°C for one week. Store at -20 to -80°C for twelve months from the date of receipt.

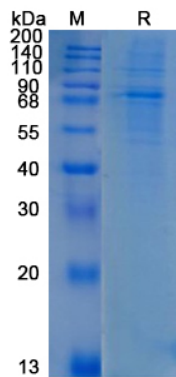
---

**Recombinant Proteins & Antibodies**

<b>Reconstitution</b>	Reconstitute in sterile water for a stock solution.
<b>Species</b>	Homo sapiens (Human)
<b>Shipping</b>	In general, proteins are provided as lyophilized powder/frozen liquid. They are shipped out with dry ice/blue ice unless customers require otherwise.
<b>Note</b>	For research use only.

## Data Image

---



SDS-PAGE

SDS-PAGE for Recombinant Human ADAM28  
protein