

Recombinant Human IL36A/IL-1F6 Protein, C-His (Active)

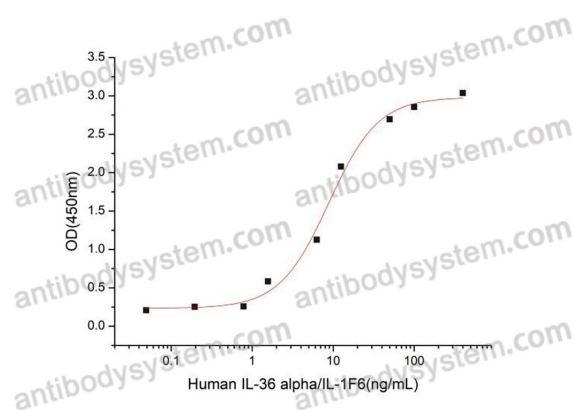
Summary

Catalog No.	AHJ75601
Alternative Names	IL1F6, IL-1 epsilon, IL1E, IL36A, Interleukin-1 family member 6, FIL1 epsilon, FIL1E, IL-1F6, Interleukin-36 alpha, Interleukin-1 epsilon
Form	Lyophilized
Storage buffer	Lyophilized from a solution in PBS pH 7.4, 5% Trehalose, 5% Mannitol.
Purity	>90% as determined by SDS-PAGE.
Applications	Bioactivity, ELISA, Immunogen, SDS-PAGE, WB
Biological activity	Measured by its ability to induce IL-8 secretion in human epithelial carcinoma cells (A431). The ED50 for this effect is 4-24 ng/mL.
Endotoxin level	<1 EU/μg of the protein by the LAL method.
Expression system	E. coli
Accession	Q9UHA7
Protein length	Met1-Phe158
Nature	Recombinant
Stability and Storage	Use a manual defrost freezer and avoid repeated freeze thaw cycles. Store at 2 to 8°C for one week. Store at -20 to -80°C for twelve months from the date of receipt.
Reconstitution	Reconstitute in sterile water for a stock solution. A copy of datasheet will be provided with the products, please refer to it for details.

Recombinant Proteins & Antibodies

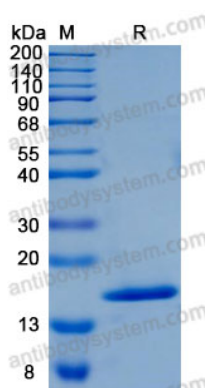
Species	Homo sapiens (Human)
Shipping	In general, proteins are provided as lyophilized powder/frozen liquid. They are shipped out with dry ice/blue ice unless customers require otherwise.
Note	For research use only.

Data Image



Measured by its ability to induce IL-8 secretion in human epithelial carcinoma cells (A431). The ED50 for this effect is 4-24 ng/mL.

Bioactivity



SDS-PAGE

SDS-PAGE for Recombinant Human IL36 alpha/IL-1F6 protein