

Recombinant Human SIGLEC8/SAF-2 Protein, C-His (Active)

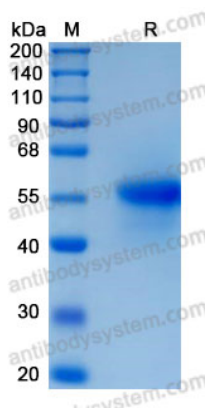
Summary

Catalog No.	AHK16101
Alternative Names	SAF2, Sialoadhesin family member 2, SAF-2, Siglec-8, SIGLEC8, Sialic acid-binding Ig-like lectin 8
Form	Lyophilized
Storage buffer	Lyophilized from a solution in PBS pH 7.4, 5% Trehalose, 5% Mannitol.
Purity	>90% as determined by SDS-PAGE.
Applications	Bioactivity, ELISA, Immunogen, SDS-PAGE, WB
Biological activity	Measured by its binding ability in a functional ELISA. When biotinylated Sialyl Lewis X was immobilized at 0.05 µg/mL (100 µL/well), it binds recombinant human SIGLEC8/SAF-2 (Cat #: AHK16101). The concentration of human SIGLEC8/SAF-2 that produces 50% of the optimal binding response is approximately 0.2-1.2 µg/mL.
Endotoxin level	<0.1 EU/µg of the protein by the LAL method.
Expression system	Mammalian Cells
Accession	Q9NYZ4
Protein length	Met17-Ala363
Nature	Recombinant
Stability and Storage	Use a manual defrost freezer and avoid repeated freeze thaw cycles. Store at 2 to 8°C for one week. Store at -20 to -80°C for twelve months from the date of receipt.

Recombinant Proteins & Antibodies

Reconstitution	Reconstitute in sterile water for a stock solution. A copy of datasheet will be provided with the products, please refer to it for details.
Species	Homo sapiens (Human)
Shipping	In general, proteins are provided as lyophilized powder/frozen liquid. They are shipped out with dry ice/blue ice unless customers require otherwise.
Note	For research use only.

Data Image



SDS-PAGE

SDS-PAGE for Recombinant Human SIGLEC8 protein