

Recombinant Mouse IL36A/IL-1F6 Protein, No tag (Active)

Summary

| | |
|------------------------------|---|
| Catalog No. | AMJ75601 |
| Alternative Names | Interleukin-36 alpha, Il1h1, Il36a, Il1e, Interleukin-1 family member 6, Il1f6, IL-1 epsilon, IL-1H1, Fil1e, IL-1F6, Interleukin-1 homolog 1, Interleukin-1 epsilon, FIL1 epsilon |
| Form | Lyophilized |
| Storage buffer | Lyophilized from a solution in PBS pH 7.4, 5% Trehalose, 5% Mannitol. |
| Purity | >90% as determined by SDS-PAGE. |
| Applications | Bioactivity, ELISA, Immunogen, SDS-PAGE, WB |
| Biological activity | Measured by its ability to induce IL-6 secretion by mouse embryonic fibroblast cells (NIH 3T3). The ED50 for this effect is typically 3-18 ng/mL. |
| Endotoxin level | <1 EU/μg of the protein by the LAL method. |
| Expression system | E. coli |
| Accession | Q9JLA2 |
| Protein length | Arg8-His160 |
| Nature | Recombinant |
| Stability and Storage | Use a manual defrost freezer and avoid repeated freeze thaw cycles. Store at 2 to 8°C for one week. Store at -20 to -80°C for twelve months from the date of receipt. |
| Reconstitution | Reconstitute in sterile water for a stock solution. A copy of datasheet will be provided with the products, please refer to it for details. |

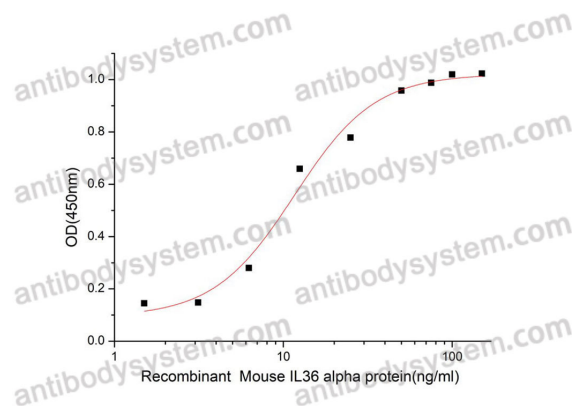
Recombinant Proteins & Antibodies

Species Mus musculus (Mouse)

Shipping In general, proteins are provided as lyophilized powder/frozen liquid. They are shipped out with dry ice/blue ice unless customers require otherwise.

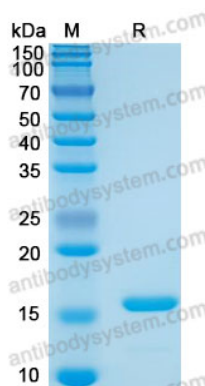
Note For research use only.

Data Image



Measured by its ability to induce IL-6 secretion by mouse embryonic fibroblast cells (NIH 3T3). The ED50 for this effect is typically 3-18 ng/mL.

Bioactivity



SDS-PAGE

SDS-PAGE for Recombinant Mouse IL36 alpha/IL-1F6 protein