

# Recombinant Human CD300c Protein, C-His (Active)

## Summary

---

<b>Catalog No.</b>	AHG17501
<b>Alternative Names</b>	IgSF16, CD300c, CMRF-35, CMRF35-like molecule 6, CMRF35A1, CMRF35A, CD300C, Immunoglobulin superfamily member 16, IGSF16, CLM-6, CMRF35, CMRF35-A1, CD300 antigen-like family member C
<b>Form</b>	Lyophilized
<b>Storage buffer</b>	Lyophilized from a solution in PBS pH 7.4, 5% Trehalose, 5% Mannitol.
<b>Purity</b>	>90% as determined by SDS-PAGE.
<b>Applications</b>	Bioactivity, ELISA, Immunogen, SDS-PAGE, WB
<b>Biological activity</b>	Measured by its ability to inhibit anti-CD3-induced proliferation of stimulated human T cells. Human T lymphocytes cultured for 72 hours with PHA were incubated for an additional 3 days in 96 well plates coated with 500 ng/mL anti CD3 mAb and recombinant human CD300c (Cat #: AHG17501).The ED50 for this effect is 4-16 µg/mL.
<b>Endotoxin level</b>	<0.1 EU/µg of the protein by the LAL method.
<b>Expression system</b>	Mammalian Cells
<b>Accession</b>	Q08708
<b>Protein length</b>	Gly21-Arg183
<b>Nature</b>	Recombinant
<b>Stability and Storage</b>	Use a manual defrost freezer and avoid repeated freeze thaw cycles. Store at 2 to 8°C for one week. Store at -20 to -80°C for twelve months from the date of receipt.

---

**Recombinant Proteins & Antibodies****Reconstitution**

Reconstitute in sterile water for a stock solution. A copy of datasheet will be provided with the products, please refer to it for details.

**Species**

Homo sapiens (Human)

**Shipping**

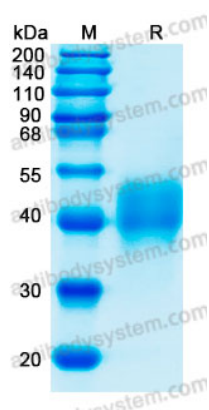
In general, proteins are provided as lyophilized powder/frozen liquid. They are shipped out with dry ice/blue ice unless customers require otherwise.

**Note**

For research use only.

## Data Image

---



SDS-PAGE

SDS-PAGE for Recombinant Human CD300c protein