

Recombinant Human LIF Protein, C-His (Active)

Summary

Catalog No.	AHD08001
Alternative Names	Emfilermin, D factor, HILDA, LIF, MLPLI, Melanoma-derived LPL inhibitor, Leukemia inhibitory factor, Differentiation-stimulating factor
Form	Lyophilized
Storage buffer	Lyophilized from a solution in PBS pH 7.4, 5% Trehalose, 5% Mannitol.
Purity	>90% as determined by SDS-PAGE.
Applications	Bioactivity, ELISA, Immunogen, SDS-PAGE, WB
Biological activity	Measured in a cell proliferation assay using human erythroleukemic cells (TF-1). The ED50 for this effect is typically 0.1-0.3 ng/mL.
Endotoxin level	<0.1 EU/μg of the protein by the LAL method.
Expression system	Mammalian Cells
Accession	P15018
Protein length	Ser23-Phe202
Nature	Recombinant
Stability and Storage	Use a manual defrost freezer and avoid repeated freeze thaw cycles. Store at 2 to 8°C for one week. Store at -20 to -80°C for twelve months from the date of receipt.
Reconstitution	Reconstitute in sterile water for a stock solution. A copy of datasheet will be provided with the products, please refer to it for details.
Species	Homo sapiens (Human)

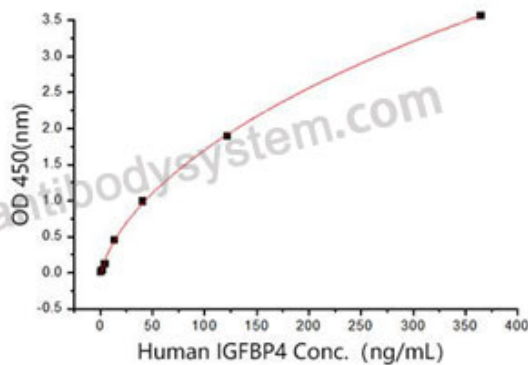
Recombinant Proteins & Antibodies

Shipping

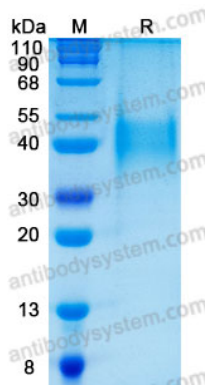
In general, proteins are provided as lyophilized powder/frozen liquid. They are shipped out with dry ice/blue ice unless customers require otherwise.

Note

For research use only.

Data Image**Bioactivity**

Measured in a cell proliferation assay using human erythroleukemic cells (TF-1). The ED50 for this effect is typically 0.1-0.3 ng/mL.

**SDS-PAGE**

SDS-PAGE for Recombinant Human LIF protein