

Recombinant Human SERPING1 Protein, C-His (Active)

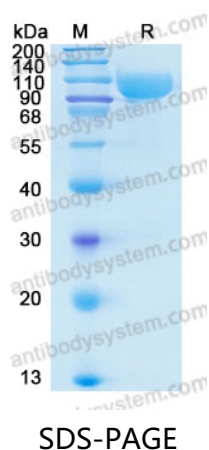
Summary

Catalog No.	AHC14301
Alternative Names	Serpin G1, SERPING1, C1Inh, C1 esterase inhibitor, Plasma protease C1 inhibitor, C1IN, C1 Inh, C1NH, C1-inhibiting factor
Form	Lyophilized
Storage buffer	Lyophilized from a solution in PBS pH 7.4, 5% Trehalose, 5% Mannitol.
Purity	>90% as determined by SDS-PAGE.
Applications	Bioactivity, ELISA, Immunogen, SDS-PAGE, WB
Biological activity	Measured by its ability to inhibit recombinant human Complement Component C1s cleavage of a colorimetric peptide substrate, Ncarbobenzyloxy-Lys-ThioBenzyl ester(Z-K-SBzl). The IC50 is <5 nM, as measured under the described conditions.
Endotoxin level	<0.1 EU/μg of the protein by the LAL method.
Expression system	Mammalian Cells
Accession	P05155
Protein length	Asn23-Ala500
Nature	Recombinant
Stability and Storage	Use a manual defrost freezer and avoid repeated freeze thaw cycles. Store at 2 to 8°C for one week. Store at -20 to -80°C for twelve months from the date of receipt.
Reconstitution	Reconstitute in sterile water for a stock solution.

Recombinant Proteins & Antibodies

Species	Homo sapiens (Human)
Shipping	In general, proteins are provided as lyophilized powder/frozen liquid. They are shipped out with dry ice/blue ice unless customers require otherwise.
Note	For research use only.

Data Image



SDS-PAGE for Recombinant Human Serpin G1 protein