

Recombinant Human LRG1 Protein, C-His (Active)

Summary

Catalog No.	AHC00701
Alternative Names	LRG1, LRG, Leucine-rich alpha-2-glycoprotein
Form	Lyophilized
Storage buffer	Lyophilized from a solution in PBS pH 7.4, 5% Trehalose, 5% Mannitol.
Purity	>90% as determined by SDS-PAGE.
Applications	Bioactivity, ELISA, Immunogen, SDS-PAGE, WB
Biological activity	Measured by its binding ability in a functional ELISA. When human Cytochrome c is coated at 1 µg/mL (100 µL/well), the concentration of recombinant human LRG1 (Cat #: AHC00701) that produces 50% of the optimal binding response is 3-15 ng/mL.
Endotoxin level	<0.1 EU/µg of the protein by the LAL method.
Expression system	Mammalian Cells
Accession	P02750
Protein length	Val36-Gln347
Nature	Recombinant
Stability and Storage	Use a manual defrost freezer and avoid repeated freeze thaw cycles. Store at 2 to 8°C for one week. Store at -20 to -80°C for twelve months from the date of receipt.
Reconstitution	Reconstitute in sterile water for a stock solution. A copy of datasheet will be provided with the products, please refer to it for details.
Species	Homo sapiens (Human)

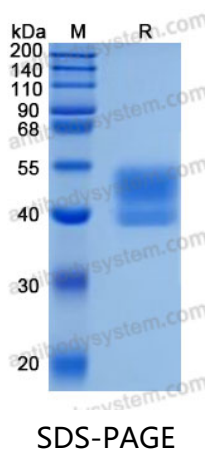
Shipping

In general, proteins are provided as lyophilized powder/frozen liquid. They are shipped out with dry ice/blue ice unless customers require otherwise.

Note

For research use only.

Data Image



SDS-PAGE for Recombinant Human LRG1 protein