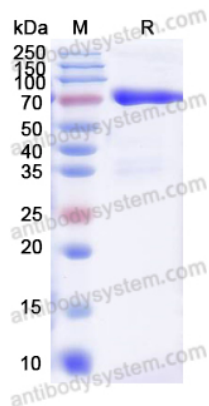


CU43 Protease (Human IgG Specific)

Summary

Catalog No.	EXX25001
Alternative Names	CU43 Protease, CU43
Form	Liquid
Storage buffer	0.01M PBS, pH 7.4.
Purity	>90% as determined by SDS-PAGE.
Applications	Proteomics
Endotoxin level	Please contact with the lab for this information.
Expression system	Mammalian cells
Protein length	CU43 Protease is cloned from <i>Corynebacterium ulcerans</i> and expressed in Mammalian cells.
Nature	Recombinant
Predicted molecular weight	70.94 kDa
Stability and Storage	Use a manual defrost freezer and avoid repeated freeze thaw cycles. Store at 2 to 8°C for one week. Store at -20°C for twelve months from the date of receipt.
Species	<i>Corynebacterium ulcerans</i>
Shipping	In general, proteins are provided as lyophilized powder/frozen liquid. They are shipped out with dry ice/blue ice unless customers require otherwise.
Note	For research use only.

Data Image



SDS-PAGE

SDS-PAGE for CU43 Protease



Experiment Example

Lane1 : Before cleavage

Lane2 : After cleavage

Human IgG1 Fc protein was cleaved by CU43

Protease at 4°C for 16 h