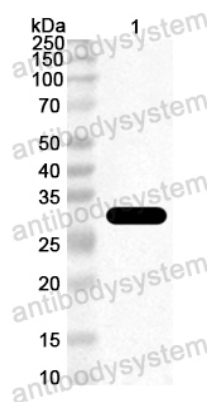


Anti-Staphylococcus aureus entA/SEA Polyclonal Antibody

Summary

Catalog No.	PXX24101
Host species	Rabbit
Species reactivity	Staphylococcus aureus (strain Newman)
Immunogen	E. coli - derived recombinant Staphylococcus aureus entA/SEA (Ser25-Ser257(Ala45Thr, Asn84Asp, Asn229Tyr)).
Form	Liquid
Storage buffer	0.01M PBS, pH 7.4, 50% Glycerol, 0.05% Proclin 300.
Clonality	Polyclonal
Isotype	IgG
Applications	ELISA, IHC, WB
Target	Enterotoxin type A, sea, NWMN_1883
Purification	Antigen affinity purification.
Accession	A0A0H3KHN8
Stability and Storage	Use a manual defrost freezer and avoid repeated freeze thaw cycles. Store at 4°C for frequent use. Store at -20 to -80°C for twelve months from the date of receipt.
Note	For research use only.

Data Image



Western Blot

Recombinant Protein lysates were subjected to SDS PAGE followed by western blot with entA/SEA antibody (PXX24101) at 1 μ g/ml.

Lane 1: Recombinant protein

Second Ab: Goat Anti-Rabbit IgG H&L Polyclonal antibody, HRP (PTB96431) at 0.1 μ g/mL.

Predict MW: 29 kDa

Observed MW: 29 kDa