

# Anti-Cat Fel d 1A/CH1/Allergen Fel dI Polyclonal Antibody

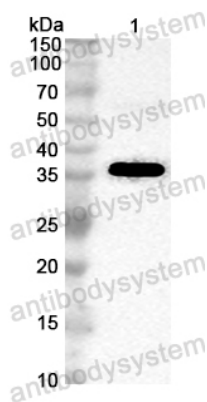
## Summary

---

<b>Catalog No.</b>	PFK29901
<b>Host species</b>	Rabbit
<b>Species reactivity</b>	Felis catus (Cat) (Felis silvestris catus)
<b>Immunogen</b>	E. coli - derived recombinant Cat Fel d 1A/CH1/Allergen Fel dI (Glu23-Cys92).
<b>Form</b>	Liquid
<b>Storage buffer</b>	0.01M PBS, pH 7.4, 50% Glycerol, 0.05% Proclin 300.
<b>Concentration</b>	1.67 mg/ml
<b>Clonality</b>	Polyclonal
<b>Isotype</b>	IgG
<b>Applications</b>	ELISA, IHC, WB
<b>Target</b>	Major allergen I polypeptide chain 1, AG4, Allergen Cat-1, Allergen Fel d I-A, Allergen FdI, Allergen Fel dI, Fel d 1-A, CH1
<b>Purification</b>	Antigen affinity purification.
<b>Accession</b>	P30438
<b>Stability and Storage</b>	Use a manual defrost freezer and avoid repeated freeze thaw cycles. Store at 4°C for frequent use. Store at -20 to -80°C for twelve months from the date of receipt.
<b>Note</b>	For research use only.

## Data Image

---



Western Blot

Recombinant Protein lysates were subjected to SDS PAGE followed by western blot with Fel d 1A/CH1/Allergen Fel dI antibody (PFK29901) at 1  $\mu$ g/ml.

Lane 1: Recombinant protein

Second Ab: Goat Anti-Rabbit IgG H&L Polyclonal antibody, HRP (PTB96431) at 0.1  $\mu$ g/mL.

Predict MW: 36 kDa

Observed MW: 36 kDa