

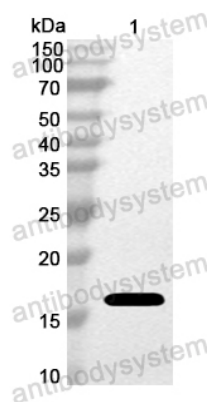
# Anti-European white birch BETVII/Allergen Bet v II Polyclonal Antibody

## Summary

---

<b>Catalog No.</b>	PZZ02501
<b>Host species</b>	Rabbit
<b>Species reactivity</b>	Betula pendula (European white birch) (Betula verrucosa)
<b>Immunogen</b>	E. coli - derived recombinant European white birch BETVII/Allergen Bet v II (Met1-Leu133).
<b>Form</b>	Liquid
<b>Storage buffer</b>	0.01M PBS, pH 7.4, 50% Glycerol, 0.05% Proclin 300.
<b>Clonality</b>	Polyclonal
<b>Isotype</b>	IgG
<b>Applications</b>	ELISA, IHC, WB
<b>Target</b>	Profilin-1, Allergen Bet v II, Pollen allergen Bet v 2, Bet v 2, BETVII, Betula pendula (European white birch) (Betula verrucosa)
<b>Purification</b>	Antigen affinity purification.
<b>Accession</b>	P25816
<b>Stability and Storage</b>	Use a manual defrost freezer and avoid repeated freeze thaw cycles. Store at 4°C for frequent use. Store at -20 to -80°C for twelve months from the date of receipt.
<b>Note</b>	For research use only.

## Data Image



Western Blot

Recombinant Protein lysates were subjected to SDS PAGE followed by western blot with BETVII/Allergen Bet v II antibody (PZZ02501) at 1 µg/ml.

Lane 1: Recombinant protein

Second Ab: Goat Anti-Rabbit IgG H&L Polyclonal antibody, HRP (PTB96431) at 0.1 µg/mL.

Predict MW: 17 kDa

Observed MW: 17 kDa