

# Anti-Cherry PRUA1/Pru av 1 Polyclonal Antibody

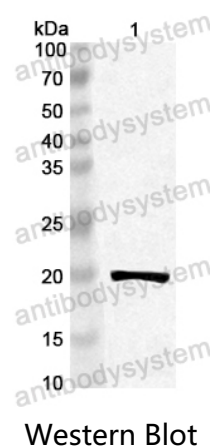
## Summary

---

|                              |  |
|------------------------------|--|
| <b>Catalog No.</b>           | PZZ05401   |
| <b>Host species</b>          | Rabbit   |
| <b>Species reactivity</b>    | Prunus avium (Cherry) (Cerasus avium)  |
| <b>Immunogen</b>             | E. coli - derived recombinant Cherry PRUA1/Pru av 1 (Met1-Asn160).   |
| <b>Form</b>                  | Liquid   |
| <b>Storage buffer</b>        | 0.01M PBS, pH 7.4, 50% Glycerol, 0.05% Proclin 300.  |
| <b>Clonality</b>             | Polyclonal   |
| <b>Isotype</b>               | IgG  |
| <b>Applications</b>          | ELISA, IHC, WB   |
| <b>Target</b>                | Major allergen Pru av 1, Allergen Pru a 1, Pru av 1, PRUA1   |
| <b>Purification</b>          | Antigen affinity purification.   |
| <b>Accession</b>             | O24248   |
| <b>Stability and Storage</b> | Use a manual defrost freezer and avoid repeated freeze thaw cycles. Store at 4°C for frequent use. Store at -20 to -80°C for twelve months from the date of receipt. |
| <b>Note</b>                  | For research use only.   |

## Data Image

---



Recombinant Protein lysates were subjected to SDS PAGE followed by western blot with PRUA1/Pru av 1 antibody (PZZ05401) at 1 µg/ml.

Lane 1: Recombinant Protein

Second Ab: Goat Anti-Rabbit IgG H&L Polyclonal antibody, HRP (PTB96431) at 0.1 µg/mL.

Predict MW: Cherry

Observed MW: