

# Anti-Human MAP2K6 Polyclonal Antibody

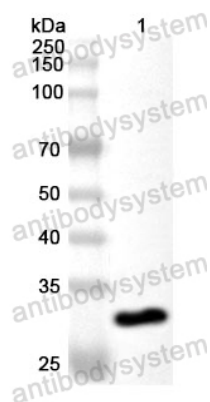
## Summary

---

<b>Catalog No.</b>	PHE92201
<b>Host species</b>	Rabbit
<b>Species reactivity</b>	Human
<b>Immunogen</b>	E. coli - derived recombinant Human MAP2K6 (Phe46-Pro306).
<b>Form</b>	Liquid
<b>Storage buffer</b>	0.01M PBS, pH 7.4, 50% Glycerol, 0.05% Proclin 300.
<b>Clonality</b>	Polyclonal
<b>Isotype</b>	IgG
<b>Applications</b>	ELISA, IHC, WB
<b>Target</b>	MEK6, Dual specificity mitogen-activated protein kinase kinase 6, SAPKK-3, PRKMK6, MAPK/ERK kinase 6, Stress-activated protein kinase kinase 3, MAP2K6, SKK3, MKK6, MAPKK 6, SAPKK3, MEK 6, MAP kinase kinase 6, SAPK kinase 3
<b>Purification</b>	Antigen affinity purification.
<b>Accession</b>	P52564
<b>Stability and Storage</b>	Use a manual defrost freezer and avoid repeated freeze thaw cycles. Store at 4°C for frequent use. Store at -20 to -80°C for twelve months from the date of receipt.
<b>Note</b>	For research use only.

## Data Image

---



Western Blot

Recombinant Protein lysates were subjected to SDS PAGE followed by western blot with MAP2K6 antibody (PHE92201) at 1  $\mu$ g/ml.

Lane 1: Recombinant Protein

Second Ab: Goat Anti-Rabbit IgG H&L Polyclonal antibody, HRP (PTB96431) at 0.1  $\mu$ g/mL.

Predict MW: Human

Observed MW: