

# Anti-Human CD20/MS4A1 Antibody (SAA2209), APC

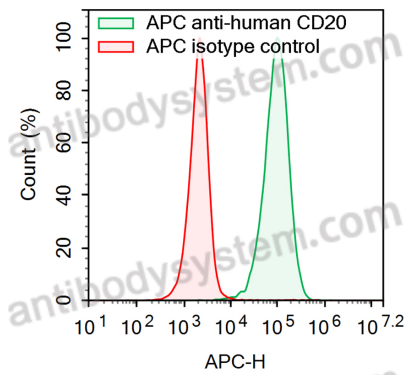
## Summary

---

<b>Catalog No.</b>	FHC90763
<b>Clone ID</b>	SAA2209
<b>Host species</b>	Human
<b>Conjugation</b>	APC
<b>Species reactivity</b>	Human
<b>Form</b>	Liquid
<b>Storage buffer</b>	0.01M PBS, pH 7.4, 0.2% BSA, 0.05% Proclin 300.
<b>Clonality</b>	Monoclonal
<b>Isotype</b>	IgG1, kappa
<b>Applications</b>	ELISA, FCM
<b>Target</b>	B-lymphocyte surface antigen B1, Membrane-spanning 4-domains subfamily A member 1, MS4A1, Leukocyte surface antigen Leu-16, B-lymphocyte antigen CD20, Bp35, CD20
<b>Purification</b>	Affinity chromatography.
<b>Endotoxin level</b>	Please contact with the lab for this information.
<b>Accession</b>	P11836
<b>Stability and Storage</b>	Store at 4°C for 12 months. Protect from light. Do not freeze.
<b>Note</b>	For research use only.

## Data Image

---



Flow-cytometry

Flow-cytometry using APC anti-Human CD20 antibody. Daudi cells were stained with an irrelevant antibody (Red Histogram) or an APC anti-Human CD20 antibody monoclonal antibody (Catalog # FHC90763 , Green Histogram) at a concentration of 5 µg/ml for 30 mins at RT. After washing, cells analysed on a NovoCyte Flow Cytometer.