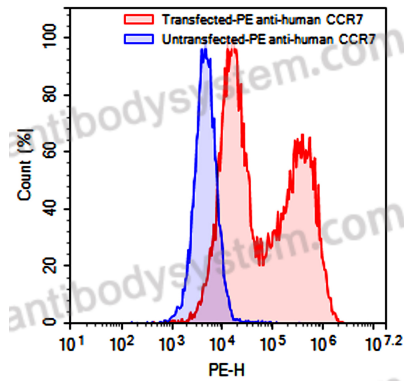


Anti-Human CD197/CCR7 Antibody (R707), PE

Summary

Catalog No.	FHD99512
Clone ID	R707
Host species	Mouse
Conjugation	PE
Species reactivity	Human
Form	Liquid
Storage buffer	0.01M PBS, pH 7.4, 0.2% BSA, 0.05% Proclin 300.
Concentration	0.5 mg/ml
Clonality	Monoclonal
Isotype	IgG1, kappa
Applications	FCM
Target	CDw197, EVI1, CMKBR7, CCR7, C-C CKR-7, CD197, CCR-7, Epstein-Barr virus-induced G-protein coupled receptor 1, MIP-3 beta receptor, EBI1, CC-CKR-7, BLR2, EBV-induced G-protein coupled receptor 1, C-C chemokine receptor type 7
Endotoxin level	Please contact with the lab for this information.
Accession	P32248
Stability and Storage	Store at 4°C for 12 months. Protect from light. Do not freeze.
Note	For research use only.

Data Image



Flow-cytometry

Flow-cytometry using PE anti-human CCR7 antibody. Untransfected (Blue Histogram) or Transfected 293T cells (Red Histogram) were fixed and permeabilized, then stained with a PE anti-human CCR7 antibody monoclonal antibody (Catalog # FHD99512) at a concentration of 5 $\mu\text{g/ml}$ for 30 mins at RT. After washing, cells analysed on a NovoCyte Flow Cytometer.