

# Research Grade Lirilumab

## Summary

---

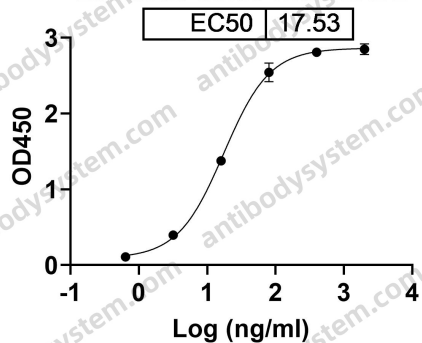
<b>Catalog No.</b>	DHE43401
<b>Alternative Names</b>	BMS-986015, IPH2102, CAS: 1000676-41-4
<b>Host species</b>	Human
<b>Species reactivity</b>	Human
<b>Form</b>	Liquid
<b>Storage buffer</b>	0.01M PBS, pH 7.4.
<b>Concentration</b>	1 mg/ml
<b>Purity</b>	>95% by SDS-PAGE.
<b>Clonality</b>	Monoclonal
<b>Isotype</b>	IgG4-kappa
<b>Applications</b>	Research Grade Biosimilar

<b>Target</b>	CD158 antigen-like family member A, KIR2DL1, Killer cell immunoglobulin-like receptor 2DL1, Natural killer-associated transcript 1, NKAT-1, MHC class I NK cell receptor, CD158A, p58 natural killer cell receptor clones CL-42/47.11, CD158a, p58.1 MHC class-I-specific NK receptor, NKAT1, p58 NK receptor CL-42/47.11, p58 NK receptor CL-43, NKAT-6, NKAT6, MHC class I NK cell receptor, CD158 antigen-like family member B1, CD158b1, p58 natural killer cell receptor clone CL-43, Natural killer-associated transcript 6, CD158B1, KIR2DL2, Killer cell immunoglobulin-like receptor 2DL2, NKAT2b, KIR2DL3, p58 natural killer cell receptor clone CL-6, p58.2 MHC class-I-specific NK receptor, CD158 antigen-like family member B2, MHC class I NK cell receptor, KIR-023GB, Killer inhibitory receptor cl 2-3, p58 NK receptor CL-6, CD158b2, Killer cell immunoglobulin-like receptor 2DL3, Natural killer-associated transcript 2, CD158B2, KIRCL23, NKAT-2, NKAT2a, NKAT2
<b>Purification</b>	Protein A/G purified from cell culture supernatant.
<b>Endotoxin level</b>	Please contact with the lab for this information.
<b>Expression system</b>	Mammalian Cells
<b>Accession</b>	P43626 & P43627 & P43628
<b>Stability and Storage</b>	Use a manual defrost freezer and avoid repeated freeze-thaw cycles. Store at 4°C short term (1-2 weeks). Store at -20°C 12 months. Store at -80°C long term.
<b>Note</b>	For research use only. Not suitable for clinical or therapeutic use.

## Data Image

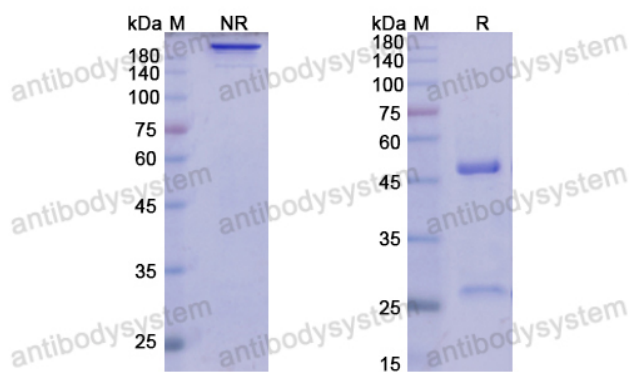
---

## Lirilumab binds with KIRD2



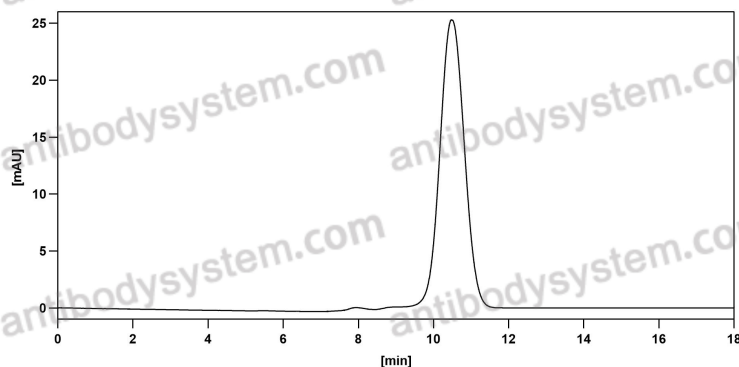
Detects Human CD158b1/KIR2DL2 in indirect ELISAs.

## Bioactivity



SDS PAGE for Lirilumab

## SDS-PAGE



The purity of this product is >95% as determined by SEC-HPLC.

## SEC-HPLC