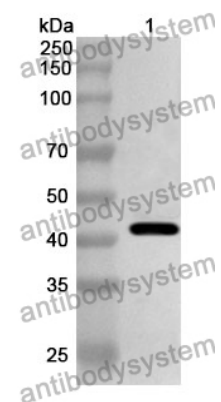


Anti-MAPK3 Polyclonal Antibody

Summary

Catalog No.	PZZ01001
Host species	Rabbit
Tested applications	ELISA: 1:4000-1:8000, IHC: 1:50-1:100, WB: 1:2000-1:8000
Species reactivity	Chinese jujube
Immunogen	E. coli - derived recombinant Chinese jujube MAPK3 (Met1-Ala375).
Form	Liquid
Storage buffer	0.01M PBS, pH 7.4, 50% Glycerol, 0.05% Proclin 300.
Clonality	Polyclonal
Isotype	IgG
Applications	ELISA, IHC, WB
Target	Mitogen-activated protein kinase,LOC107411280,MAPK3,Mitogen-activated protein kinase 3,Plant
Purification	Purified by antigen affinity column.
Accession	A0A6P3Z9V1
Stability and Storage	Use a manual defrost freezer and avoid repeated freeze thaw cycles. Store at 2 to 8°C for frequent use. Store at -20 to -80°C for twelve months from the date of receipt.
Note	For research use only.

Data Image



WESTERN BLOT

Recombinant Protein lysates were subjected to SDS PAGE followed by western blot with MAPK3 antibody (PZZ01001) at 1 µg/ml.

Lane 1: Recombinant protein

Second Ab: Goat Anti-Rabbit IgG H&L Polyclonal antibody, HRP (PTB96431) at 0.1 µg/mL.

Predict MW: 43 kDa

Observed MW: 43 kDa