

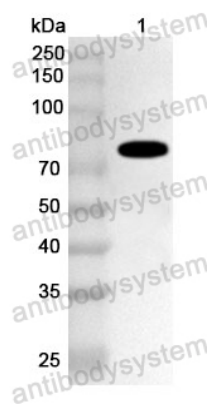
Anti-Streptococcus agalactiae CYK3/IgdE3

Polyclonal Antibody

Summary

Catalog No.	PXX22401
Host species	Rabbit
Tested applications	ELISA: 1:4000-1:8000, WB: 1:1000-1:4000
Species reactivity	Streptococcus agalactiae LMG 14609
Immunogen	E. coli - derived recombinant Streptococcus agalactiae CYK3/IgdE3 (Thr45-Tyr463).
Form	Liquid
Storage buffer	0.01M PBS, pH 7.4, 50% Glycerol, 0.05% Proclin 300.
Clonality	Polyclonal
Isotype	IgG
Applications	ELISA, IHC, WB
Target	hypothetical protein SAG0135_08530, hypothetical protein SAG0135_08530
Purification	Purified by antigen affinity column.
Accession	EPU23939.1
Stability and Storage	Use a manual defrost freezer and avoid repeated freeze thaw cycles. Store at 2 to 8°C for frequent use. Store at -20 to -80°C for twelve months from the date of receipt.
Note	For research use only.

Data Image



Western Blot

Recombinant Protein lysates were subjected to SDS PAGE followed by western blot with CYK3/IgdE3 antibody (PXX22401) at 1 μ g/ml.

Lane 1: Recombinant Protein

Second Ab: Goat Anti-Rabbit IgG H&L Polyclonal antibody, HRP (PTB96431) at 0.1 μ g/mL.

Predict MW: 77 kDa

Observed MW: 77 kDa