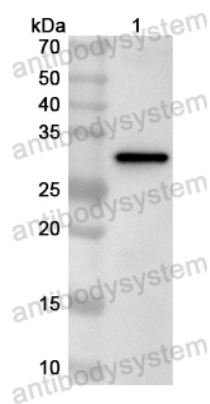


Anti-Mouse CA1/Carbonic anhydrase 1 Polyclonal Antibody

Summary

Catalog No.	PMB88901
Host species	Rabbit
Tested applications	ELISA: 1:4000-1:8000, IHC: 1:50-1:100, WB: 1:1000-1:4000
Species reactivity	Mouse
Immunogen	E. coli - derived recombinant Mouse CA1/Carbonic anhydrase 1 (Met1-Phe261).
Form	Liquid
Storage buffer	0.01M PBS, pH 7.4, 50% Glycerol, 0.05% Proclin 300.
Clonality	Polyclonal
Isotype	IgG
Applications	ELISA, IHC, WB
Target	Carbonic anhydrase 1, 4.2.1.1, Carbonate dehydratase I, Carbonic anhydrase I, CA-I, Cyanamide hydratase CA1, 4.2.1.69, Ca1, Car1
Purification	Purified by antigen affinity column.
Accession	P13634
Stability and Storage	Use a manual defrost freezer and avoid repeated freeze thaw cycles. Store at 2 to 8°C for frequent use. Store at -20 to -80°C for twelve months from the date of receipt.
Note	For research use only.

Data Image



Western Blot

Recombinant Protein lysates were subjected to SDS PAGE followed by western blot with CA1/Carbonic anhydrase 1 antibody (PMB88901) at 1 μ g/ml.

Lane 1: Recombinant Protein

Second Ab: Goat Anti-Rabbit IgG H&L Polyclonal antibody, HRP (PTB96431) at 0.1 μ g/mL.

Predict MW: 30 kDa

Observed MW: 30 kDa