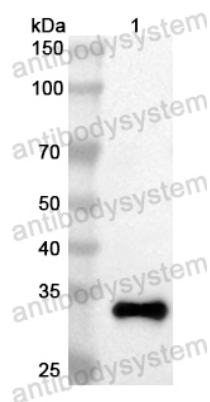


Anti-Mouse CD20/MS4A1 Polyclonal Antibody

Summary

| | |
|------------------------------|---|
| Catalog No. | PMC90701 |
| Host species | Rabbit |
| Tested applications | ELISA: 1:4000-1:8000, IHC: 1:50-1:100, WB: 1:1000-1:4000 |
| Species reactivity | Mouse |
| Immunogen | E. coli - derived recombinant Mouse CD20/MS4A1 (Leu133-Ser182). |
| Form | Liquid |
| Storage buffer | 0.01M PBS, pH 7.4, 50% Glycerol, 0.05% Proclin 300. |
| Clonality | Polyclonal |
| Isotype | IgG |
| Applications | ELISA, IHC, WB |
| Target | B-lymphocyte antigen CD20, B-cell differentiation antigen Ly-44, Lymphocyte antigen 44, Membrane-spanning 4-domains subfamily A member 1, CD20, Ms4a1, Cd20, Ly-44, Ms4a2 |
| Purification | Purified by antigen affinity column. |
| Accession | P19437 |
| Stability and Storage | Use a manual defrost freezer and avoid repeated freeze thaw cycles. Store at 2 to 8°C for frequent use. Store at -20 to -80°C for twelve months from the date of receipt. |
| Note | For research use only. |

Data Image



Western Blot

Recombinant Protein lysates were subjected to SDS PAGE followed by western blot with CD20/MS4A1 antibody (PMC90701) at 1 μ g/ml.

Lane 1: Recombinant Protein

Second Ab: Goat Anti-Rabbit IgG H&L Polyclonal antibody, HRP (PTB96431) at 0.1 μ g/mL.

Predict MW: 34 kDa

Observed MW: 34 kDa