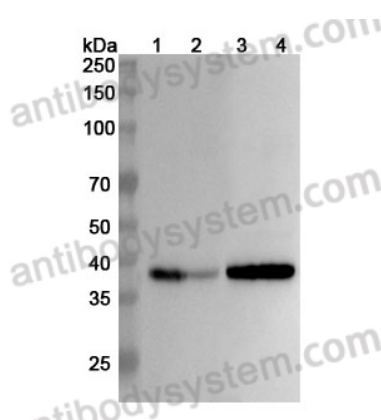


Anti-Human SYP/Synaptophysin Polyclonal Antibody

Summary

Catalog No.	PHC32201
Host species	Rabbit
Tested applications	ELISA: 1:4000-1:8000, IHC: 1:50-1:100, WB: 1:1000-1:4000
Species reactivity	Human
Immunogen	E. coli - derived recombinant Human SYP/Synaptophysin.
Form	Liquid
Storage buffer	0.01M PBS, pH 7.4, 50% Glycerol, 0.05% Proclin 300.
Clonality	Polyclonal
Isotype	IgG
Applications	ELISA, IHC, WB
Target	Synaptophysin, Major synaptic vesicle protein p38, SYP
Purification	Purified by antigen affinity column.
Accession	P08247
Stability and Storage	Use a manual defrost freezer and avoid repeated freeze thaw cycles. Store at 2 to 8°C for frequent use. Store at -20 to -80°C for twelve months from the date of receipt.
Note	For research use only.

Data Image



Western Blot

Various lysates were subjected to SDS PAGE followed by western blot with SYP antibody (PHC32201) at 1 µg/ml.

Lane 1: Mouse brain lysate

Lane 2: Mouse cerebellum lysate

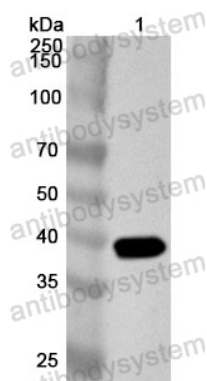
Lane 3: Rat brain lysate

Lane 4: Rat cerebellum lysate

Second Ab: Goat Anti-Rabbit IgG H&L Polyclonal antibody, HRP (PTB96431) at 0.1 µg/mL.

Predict MW: 34 kDa

Observed MW: 38 kDa



Western Blot

Recombinant Protein lysates were subjected to SDS PAGE followed by western blot with SYP/Synaptophysin antibody (PHC32201) at 1 µg/ml.

Lane 1: Recombinant Protein

Second Ab: Goat Anti-Rabbit IgG H&L Polyclonal antibody, HRP (PTB96431) at 0.1 µg/mL.

Predict MW: 39 kDa

Observed MW: 39 kDa