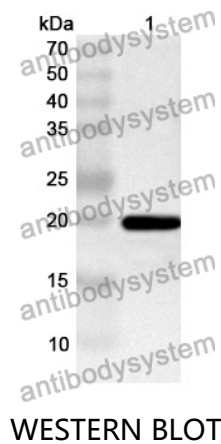


Anti-PLAA Polyclonal Antibody

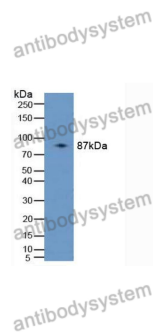
Summary

Catalog No.	PHJ84901
Host species	Rabbit
Tested applications	ELISA: 1:4000-1:8000, IHC: 1:50-1:100, WB: 1:1000-1:4000
Species reactivity	Human, Mouse, Rat
Immunogen	E. coli - derived recombinant Human PLAA (Glu162-Ala312).
Form	Liquid
Storage buffer	0.01M PBS, pH 7.4, 50% Glycerol, 0.05% Proclin 300.
Clonality	Polyclonal
Isotype	IgG
Applications	ELISA, IHC, WB
Target	PLAP, PLA2P, Phospholipase A-2-activating protein, PLAA
Purification	Purified by antigen affinity column.
Accession	Q9Y263
Stability and Storage	Use a manual defrost freezer and avoid repeated freeze thaw cycles. Store at 2 to 8°C for frequent use. Store at -20 to -80°C for twelve months from the date of receipt.
Note	For research use only.

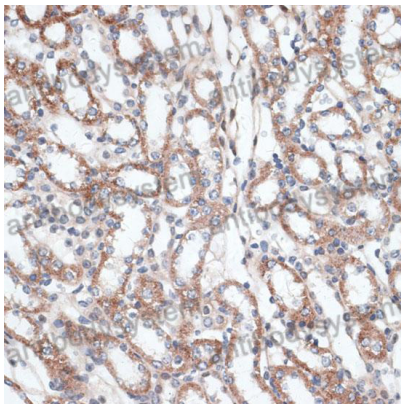
Data Image



WESTERN BLOT



Western Blot



Immunohistochemical

Recombinant Protein lysates were subjected to SDS PAGE followed by western blot with PLAA antibody (PHJ84901) at 1 $\mu\text{g/ml}$.

Lane 1: Recombinant protein

Second Ab: Goat Anti-Rabbit IgG H&L Polyclonal antibody, HRP (PTB96431) at 0.1 $\mu\text{g/mL}$.

Predict MW: 19 kDa

Observed MW: 19 kDa

Various lysates were subjected to SDS PAGE followed by western blot with PLAA antibody (PHJ84901) at 1 $\mu\text{g/ml}$.

Lane 1: 293T

Second Ab: Goat Anti-Rabbit IgG H&L Polyclonal antibody, HRP (PTB96431) at 0.1 $\mu\text{g/mL}$.

Predict MW: 87 kDa

Observed MW: 87 kDa

Immunohistochemical analysis of mouse kidney stained for PLAA with PHJ84901.