

Anti-Human GBA Polyclonal Antibody

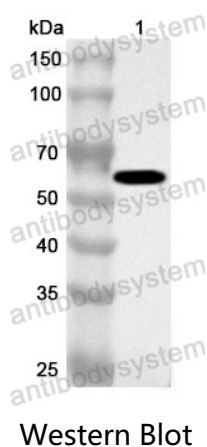
Summary

Catalog No.	PHC05702
Host species	Rabbit
Tested applications	ELISA: 1:4000-1:8000, IHC: 1:50-1:100, WB: 1:1000-1:4000
Species reactivity	Human
Immunogen	E. coli - derived recombinant Human GBA (Ala40-Gln536).
Form	Liquid
Storage buffer	0.01M PBS, pH 7.4, 50% Glycerol, 0.05% Proclin 300.
Clonality	Polyclonal
Isotype	IgG
Applications	ELISA, IHC, WB
Target	Lysosomal acid glucosylceramidase, Lysosomal acid GCase, 3.2.1.45, Acid beta-glucosidase, Alglucerase, Beta-glucocerebrosidase, Beta-GC, Beta-glucosylceramidase 1, Cholesterol glucosyltransferase, SGTase, 2.4.1.-, Cholesteryl-beta-glucosidase, 3.2.1.-, D-glucosyl-N-acylsphingosine glucohydrolase, Glucosylceramidase beta 1, Imiglucerase, Lysosomal cholesterol glycosyltransferase, Lysosomal galactosylceramidase, 3.2.1.46, Lysosomal glucosylceramidase, GBA1, GBA, GC, GLUC
Purification	Purified by antigen affinity column.
Accession	P04062
Stability and Storage	Use a manual defrost freezer and avoid repeated freeze thaw cycles. Store at 2 to 8°C for frequent use. Store at -20 to -80°C for twelve months from the date of receipt.

Note

For research use only.

Data Image



Recombinant Protein lysates were subjected to SDS PAGE followed by western blot with GBA antibody (PHC05702) at 1 μ g/ml.

Lane 1: Recombinant Protein

Second Ab: Goat Anti-Rabbit IgG H&L Polyclonal antibody, HRP (PTB96431) at 0.1 μ g/mL.

Predict MW: 58 kDa

Observed MW: 58 kDa