

# Anti-Human SEC14L2 Polyclonal Antibody

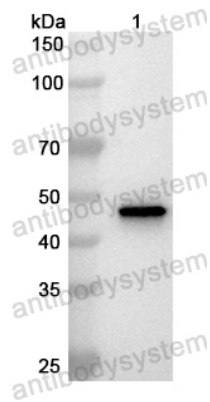
## Summary

---

|                              |   |
|------------------------------|---|
| <b>Catalog No.</b>           | PHB40101  |
| <b>Host species</b>          | Rabbit  |
| <b>Tested applications</b>   | ELISA: 1:4000-1:8000, IHC: 1:50-1:100, WB: 1:1000-1:4000  |
| <b>Species reactivity</b>    | Human   |
| <b>Immunogen</b>             | E. coli - derived recombinant Human SEC14L2 (Met1-Lys403).  |
| <b>Form</b>                  | Liquid  |
| <b>Storage buffer</b>        | 0.01M PBS, pH 7.4, 50% Glycerol, 0.05% Proclin 300.   |
| <b>Clonality</b>             | Polyclonal  |
| <b>Isotype</b>               | IgG   |
| <b>Applications</b>          | ELISA, IHC, WB  |
| <b>Target</b>                | SEC14L2, Supernatant protein factor, C22orf6, Squalene transfer protein, KIAA1658, hTAP, TAP, KIAA1186, SPF, Alpha-tocopherol-associated protein, SEC14-like protein 2    |
| <b>Purification</b>          | Purified by antigen affinity column.  |
| <b>Accession</b>             | O76054  |
| <b>Stability and Storage</b> | Use a manual defrost freezer and avoid repeated freeze thaw cycles. Store at 2 to 8°C for frequent use. Store at -20 to -80°C for twelve months from the date of receipt. |
| <b>Note</b>                  | For research use only.  |

## Data Image

---



Western blot

Recombinant Protein lysates were subjected to SDS PAGE followed by western blot with SEC14L2 antibody (PHB40101) at 1  $\mu\text{g/ml}$ .

Lane 1: Recombinant Protein

Second Ab: Goat Anti-Rabbit IgG H&L Polyclonal antibody, HRP (PTB96431) at 0.1  $\mu\text{g/mL}$ .

Predict MW: 48 kDa

Observed MW: 48 kDa