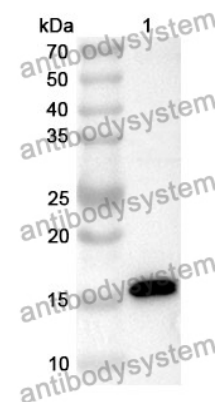


Anti-PLA2G2D Polyclonal Antibody

Summary

Catalog No.	PHJ81901
Host species	Rabbit
Tested applications	ELISA: 1:4000-1:8000, IHC: 1:50-1:100, WB: 1:1000-1:4000
Species reactivity	Human
Immunogen	E. coli - derived recombinant Human PLA2G2D (Gly21-Cys145).
Form	Liquid
Storage buffer	0.01M PBS, pH 7.4, 50% Glycerol, 0.05% Proclin 300.
Clonality	Polyclonal
Isotype	IgG
Applications	ELISA, IHC, WB
Target	PLA2IID,SPLASH,Group IID secretory phospholipase A2,sPLA2-IID,Secretory-type PLA,stroma-associated homolog,GIID sPLA2,Phosphatidylcholine 2-acylhydrolase 2D,PLA2G2D
Purification	Purified by antigen affinity column.
Accession	Q9UNK4
Stability and Storage	Use a manual defrost freezer and avoid repeated freeze thaw cycles. Store at 2 to 8°C for frequent use. Store at -20 to -80°C for twelve months from the date of receipt.
Note	For research use only.

Data Image



WESTERN BLOT

Recombinant Protein lysates were subjected to SDS PAGE followed by western blot with PLA2G2D antibody (PHJ81901) at 1 μ g/ml.

Lane 1: Recombinant protein

Second Ab: Goat Anti-Rabbit IgG H&L Polyclonal antibody, HRP (PTB96431) at 0.1 μ g/mL.

Predict MW: 17 kDa

Observed MW: 17 kDa