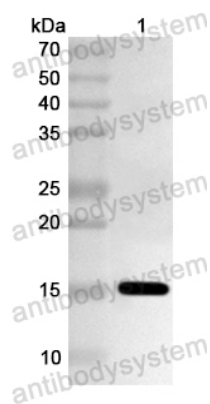


Anti-Human POLR3G Polyclonal Antibody

Summary

Catalog No.	PHA49101
Host species	Rabbit
Tested applications	ELISA: 1:4000-1:8000, IHC: 1:50-1:100, WB: 1:1000-1:4000
Species reactivity	Human
Immunogen	E. coli - derived recombinant Human POLR3G (Met1-Met110).
Form	Liquid
Storage buffer	0.01M PBS, pH 7.4, 50% Glycerol, 0.05% Proclin 300.
Clonality	Polyclonal
Isotype	IgG
Applications	ELISA, IHC, WB
Target	DNA-directed RNA polymerase III subunit RPC7, RNA polymerase III subunit C7, DNA-directed RNA polymerase III subunit G, RNA polymerase III 32 kDa alpha subunit, RPC32-alpha, RNA polymerase III 32 kDa subunit, RPC32, POLR3G
Purification	Purified by antigen affinity column.
Accession	O15318
Stability and Storage	Use a manual defrost freezer and avoid repeated freeze thaw cycles. Store at 2 to 8°C for frequent use. Store at -20 to -80°C for twelve months from the date of receipt.
Note	For research use only.

Data Image



Western blot

Recombinant Protein lysates were subjected to SDS PAGE followed by western blot with POLR3G antibody (PHA49101) at 1 μ g/ml.

Lane 1: Recombinant Protein

Second Ab: Goat Anti-Rabbit IgG H&L Polyclonal antibody, HRP (PTB96431) at 0.1 μ g/mL.

Predict MW: 15 kDa

Observed MW: 15 kDa