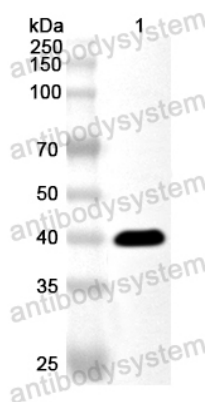


Anti-Human DEGS1 Polyclonal Antibody

Summary

Catalog No.	PHA42201
Host species	Rabbit
Tested applications	ELISA: 1:4000-1:8000, IHC: 1:50-1:100, WB: 1:1000-1:4000
Species reactivity	Human
Immunogen	E. coli - derived recombinant Human DEGS1 (Ile230-Glu323).
Form	Liquid
Storage buffer	0.01M PBS, pH 7.4, 50% Glycerol, 0.05% Proclin 300.
Clonality	Polyclonal
Isotype	IgG
Applications	ELISA, IHC, WB
Target	Sphingolipid delta(4)-desaturase DES1, 1.14.19.17, Cell migration-inducing gene 15 protein, Degenerative spermatocyte homolog 1, Dihydroceramide desaturase-1, Membrane lipid desaturase, Retinol isomerase, 5.2.1.-, DEGS1, DES1, MLD, MIG15
Purification	Purified by antigen affinity column.
Accession	O15121
Stability and Storage	Use a manual defrost freezer and avoid repeated freeze thaw cycles. Store at 2 to 8°C for frequent use. Store at -20 to -80°C for twelve months from the date of receipt.
Note	For research use only.

Data Image



Western blot

Recombinant Protein lysates were subjected to SDS PAGE followed by western blot with DEGS1 antibody (PHA42201) at 1 μ g/ml.

Lane 1: Recombinant Protein

Second Ab: Goat Anti-Rabbit IgG H&L Polyclonal antibody, HRP (PTB96431) at 0.1 μ g/mL.

Predict MW: 39 kDa

Observed MW: 39 kDa