

# Anti-Human SLC27A2 Polyclonal Antibody

## Summary

---

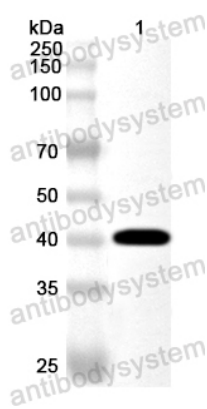
<b>Catalog No.</b>	PHA36601
<b>Host species</b>	Rabbit
<b>Tested applications</b>	ELISA: 1:4000-1:8000, IHC: 1:50-1:100, WB: 1:1000-1:4000
<b>Species reactivity</b>	Human
<b>Immunogen</b>	E. coli - derived recombinant Human SLC27A2 (Gly283-Leu620).
<b>Form</b>	Liquid
<b>Storage buffer</b>	0.01M PBS, pH 7.4, 50% Glycerol, 0.05% Proclin 300.
<b>Clonality</b>	Polyclonal
<b>Isotype</b>	IgG
<b>Applications</b>	ELISA, IHC, WB
<b>Target</b>	Long-chain fatty acid transport protein 2, Arachidonate--CoA ligase, 6.2.1.15, Fatty acid transport protein 2, FATP-2, Fatty-acid-coenzyme A ligase, very long-chain 1, Long-chain-fatty-acid--CoA ligase, 6.2.1.3, Phytanate--CoA ligase, 6.2.1.24, Solute carrier family 27 member 2, THCA-CoA ligase, 6.2.1.7, Very long-chain acyl-CoA synthetase, VLACS, VLCS, 6.2.1.-, Very long-chain-fatty-acid-CoA ligase, SLC27A2, ACSVL1, FACVL1, FATP2, VLACS
<b>Purification</b>	Purified by antigen affinity column.
<b>Accession</b>	O14975
<b>Stability and Storage</b>	Use a manual defrost freezer and avoid repeated freeze thaw cycles. Store at 2 to 8°C for frequent use. Store at -20 to -80°C for twelve months from the date of receipt.

**Note**

For research use only.

## Data Image

---



Western blot

Recombinant Protein lysates were subjected to SDS PAGE followed by western blot with SLC27A2 antibody (PHA36601) at 1 µg/ml.

Lane 1: Recombinant Protein

Second Ab: Goat Anti-Rabbit IgG H&L Polyclonal antibody, HRP (PTB96431) at 0.1 µg/mL.

Predict MW: 41 kDa

Observed MW: 41 kDa