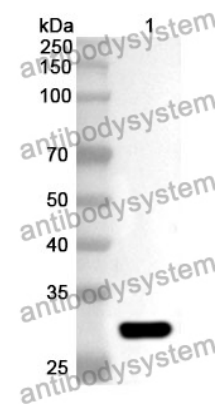


Anti-MTUS1 Polyclonal Antibody

Summary

Catalog No.	PHJ80101
Host species	Rabbit
Tested applications	ELISA: 1:4000-1:8000, IHC: 1:50-1:100, WB: 1:1000-1:4000
Species reactivity	Human
Immunogen	E. coli - derived recombinant Human MTUS1 (Met1031-Arg1270).
Form	Liquid
Storage buffer	0.01M PBS, pH 7.4, 50% Glycerol, 0.05% Proclin 300.
Clonality	Polyclonal
Isotype	IgG
Applications	ELISA, IHC, WB
Target	AT2 receptor-binding protein,Angiotensin-II type 2 receptor-interacting protein,ATBP,Mitochondrial tumor suppressor 1,MTSG1,MTUS1,ATIP,Microtubule-associated tumor suppressor 1,GK1,KIAA1288
Purification	Purified by antigen affinity column.
Accession	Q9ULD2
Stability and Storage	Use a manual defrost freezer and avoid repeated freeze thaw cycles. Store at 2 to 8°C for frequent use. Store at -20 to -80°C for twelve months from the date of receipt.
Note	For research use only.

Data Image



Recombinant Protein lysates were subjected to SDS PAGE followed by western blot with MTUS1 antibody (PHJ80101) at 1 μ g/ml.

Lane 1: Recombinant protein

Second Ab: Goat Anti-Rabbit IgG H&L Polyclonal antibody, HRP (PTB96431) at 0.1 μ g/mL.

Predict MW: 30 kDa

Observed MW: 30 kDa