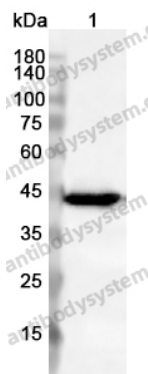


Anti-FKBPL Polyclonal Antibody

Summary

Catalog No.	PHJ77801
Host species	Rabbit
Tested applications	ELISA: 1:4000-1:8000, IHC: 1:50-1:100, WB: 1:1000-1:4000
Species reactivity	Human
Immunogen	E. coli - derived recombinant Human FKBPL (Met1-Gly349).
Form	Liquid
Storage buffer	0.01M PBS, pH 7.4, 50% Glycerol, 0.05% Proclin 300.
Clonality	Polyclonal
Isotype	IgG
Applications	ELISA, IHC, WB
Target	FK506-binding protein-like,DIR1,FKBPL,NG7,WISp39,WAF-1/CIP1 stabilizing protein 39
Purification	Purified by antigen affinity column.
Accession	Q9UIM3
Stability and Storage	Use a manual defrost freezer and avoid repeated freeze thaw cycles. Store at 2 to 8°C for frequent use. Store at -20 to -80°C for twelve months from the date of receipt.
Note	For research use only.

Data Image



Western blot

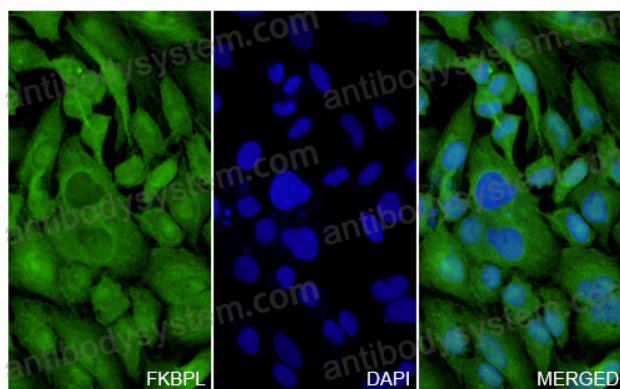
Various lysates were subjected to SDS PAGE followed by western blot with FKBPL antibody (PHJ77801) at 0.98ug/ml.

Lane 1: 293T cell lysate

Second Ab: Goat Anti-Rabbit IgG H&L Polyclonal antibody, HRP (PTB96431) at 0.1 µg/mL.

Predict MW: 38 kDa

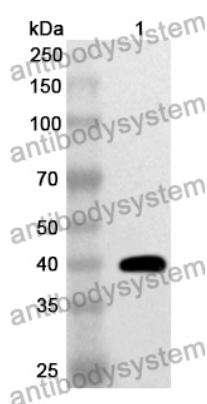
Observed MW: 44 kDa



Immunocytochemistry/ Immunofluorescence

FKBPL in HeLa Cell Line.

The HeLa cells were fixed with 4% paraformaldehyde (20 min), and then blocked with 5% goat serum for 1h. And the cells were incubated for 2h at 37°C with FKBPL (PHJ77801) at 19.6 µg/ml. The section was then incubated with Goat Anti-Rabbit IgG (Alexa Fluor-488) preabsorbed at 1/100 dilution (Shown in green) for 1 hour at room temperature. Nuclear DNA was labelled with DAPI (shown in blue).



Western Blot

Recombinant Protein lysates were subjected to SDS PAGE followed by western blot with FKBPL antibody (PHJ77801) at 1 µg/ml.

Lane 1: Recombinant Protein

Second Ab: Goat Anti-Rabbit IgG H&L Polyclonal antibody, HRP (PTB96431) at 0.1 µg/mL.

Predict MW: 40 kDa

Observed MW: 40 kDa