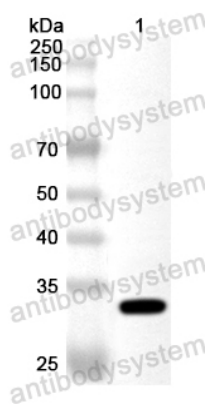


Anti-Pseudomonas fluorescens estF/Arylesterase Polyclonal Antibody

Summary

Catalog No.	PXX19901
Host species	Rabbit
Tested applications	ELISA: 1:4000-1:8000, WB: 1:1000-1:4000
Species reactivity	Pseudomonas fluorescens
Immunogen	E. coli - derived recombinant Pseudomonas fluorescens estF/Arylesterase (Met1-Arg272).
Form	Liquid
Storage buffer	0.01M PBS, pH 7.4, 50% Glycerol, 0.05% Proclin 300.
Clonality	Polyclonal
Isotype	IgG
Applications	ELISA, IHC, WB
Target	Arylesterase, 3.1.1.2, Aryl-ester hydrolase, Carboxylic acid perhydrolase, PFE, Putative bromoperoxidase, 1.-.-.-, estF
Purification	Purified by antigen affinity column.
Accession	P22862
Stability and Storage	Use a manual defrost freezer and avoid repeated freeze thaw cycles. Store at 2 to 8°C for frequent use. Store at -20 to -80°C for twelve months from the date of receipt.
Note	For research use only.

Data Image



Western Blot

Recombinant Protein lysates were subjected to SDS PAGE followed by western blot with estF/Arylesterase antibody (PXX19901) at 1 μ g/ml.

Lane 1: Recombinant Protein

Second Ab: Goat Anti-Rabbit IgG H&L Polyclonal antibody, HRP (PTB96431) at 0.1 μ g/mL.

Predict MW: 32 kDa

Observed MW: 32 kDa