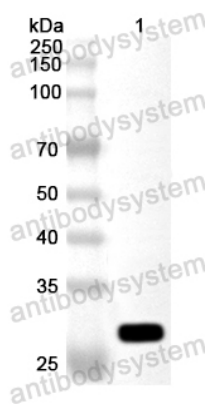


Anti-Mycobacterium leprae Secretion protein EspA Polyclonal Antibody

Summary

Catalog No.	PXX21301
Host species	Rabbit
Tested applications	ELISA: 1:4000-1:8000, WB: 1:1000-1:4000
Species reactivity	Mycobacterium leprae (strain TN)
Immunogen	E. coli - derived recombinant Mycobacterium leprae Secretion protein EspA (Ser2-Lys107).
Form	Liquid
Storage buffer	0.01M PBS, pH 7.4, 50% Glycerol, 0.05% Proclin 300.
Clonality	Polyclonal
Isotype	IgG
Applications	ELISA, IHC, WB
Target	ESX-1 secretion-associated protein EspA/EspE-like domain-containing protein, ML0405
Purification	Purified by antigen affinity column.
Accession	Q49722
Stability and Storage	Use a manual defrost freezer and avoid repeated freeze thaw cycles. Store at 2 to 8°C for frequent use. Store at -20 to -80°C for twelve months from the date of receipt.
Note	For research use only.

Data Image



Western Blot

Recombinant Protein lysates were subjected to SDS PAGE followed by western blot with Secretion protein EspA antibody (PXX21301) at 1 μ g/ml.

Lane 1: Recombinant Protein

Second Ab: Goat Anti-Rabbit IgG H&L Polyclonal antibody, HRP (PTB96431) at 0.1 μ g/mL.

Predict MW: 27 kDa

Observed MW: 27 kDa