

# Anti-SINV Spike glycoprotein E1 Polyclonal Antibody

## Summary

---

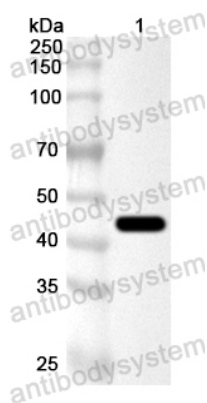
<b>Catalog No.</b>	PVV37801
<b>Host species</b>	Rabbit
<b>Tested applications</b>	ELISA: 1:4000-1:8000, IHC: 1:50-1:200, WB: 1:500-1:4000
<b>Species reactivity</b>	Sindbis virus (SINV)
<b>Immunogen</b>	E. coli - derived recombinant SINV Spike glycoprotein E1 (Tyr807-Ser1212).
<b>Form</b>	Liquid
<b>Storage buffer</b>	0.01M PBS, pH 7.4, 50% Glycerol, 0.05% Proclin 300.
<b>Concentration</b>	1 mg/ml
<b>Clonality</b>	Polyclonal
<b>Isotype</b>	IgG
<b>Applications</b>	ELISA, IHC, WB
<b>Target</b>	Structural polyprotein, p130, Capsid protein, 3.4.21.90, Coat protein, C, Precursor of protein E3/E2, p62, pE2, Assembly protein E3, Spike glycoprotein E2, E2 envelope glycoprotein, 6K protein, Spike glycoprotein E1, E1 envelope glycoprotein
<b>Purification</b>	Purified by antigen affinity column.
<b>Accession</b>	P03316

**Stability and Storage**

Use a manual defrost freezer and avoid repeated freeze thaw cycles. Store at 2 to 8°C for frequent use. Store at -20 to -80°C for twelve months from the date of receipt.

**Note**

For research use only.

**Data Image**

Western Blot

Recombinant Protein lysates were subjected to SDS PAGE followed by western blot with Spike glycoprotein E1 antibody (PVV37801) at 1 µg/ml.

Lane 1: Recombinant Protein

Second Ab: Goat Anti-Rabbit IgG H&L Polyclonal antibody, HRP (PTB96431) at 0.1 µg/mL.

Predict MW: 46 kDa

Observed MW: 46 kDa