

Anti-WEEV Spike glycoprotein E1 Polyclonal Antibody

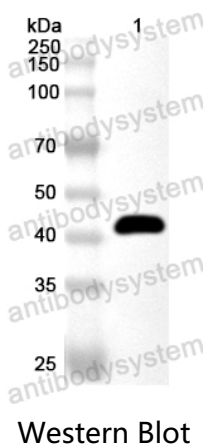
Summary

Catalog No.	PVV34403
Host species	Rabbit
Tested applications	ELISA: 1:4000-1:8000, WB: 1:1000-1:4000
Species reactivity	Western equine encephalitis virus (WEEV)
Immunogen	E. coli - derived recombinant WEEV Spike glycoprotein E1 (Ser320-Val687).
Form	Liquid
Storage buffer	0.01M PBS, pH 7.4, 50% Glycerol, 0.05% Proclin 300.
Clonality	Polyclonal
Isotype	IgG
Applications	ELISA, IHC, WB
Target	Structural polyprotein, p130, Capsid protein, 3.4.21.90, Coat protein, C, Precursor of protein E3/E2, p62, pE2, Assembly protein E3, Spike glycoprotein E2, E2 envelope glycoprotein, 6K protein, Spike glycoprotein E1, E1 envelope glycoprotein
Purification	Purified by antigen affinity column.
Accession	P13897
Stability and Storage	Use a manual defrost freezer and avoid repeated freeze thaw cycles. Store at 2 to 8°C for frequent use. Store at -20 to -80°C for twelve months from the date of receipt.

Note

For research use only.

Data Image



Recombinant Protein lysates were subjected to SDS PAGE followed by western blot with Spike glycoprotein E1 antibody (PVV34403) at 1 µg/ml.

Lane 1: Recombinant Protein

Second Ab: Goat Anti-Rabbit IgG H&L Polyclonal antibody, HRP (PTB96431) at 0.1 µg/mL.

Predict MW: 44 kDa

Observed MW: 44 kDa