

Anti-WEEV Spike glycoprotein E1 Polyclonal Antibody

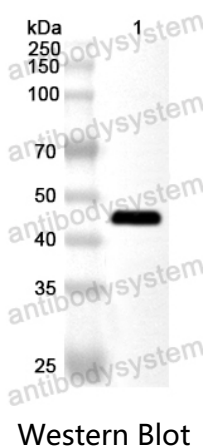
Summary

| | |
|------------------------------|---|
| Catalog No. | PVV34402 |
| Host species | Rabbit |
| Tested applications | ELISA: 1:4000-1:8000, WB: 1:1000-1:4000 |
| Species reactivity | Western equine encephalitis virus (WEEV) |
| Immunogen | E. coli - derived recombinant WEEV Spike glycoprotein E1 (Ile810-Asn1205). |
| Form | Liquid |
| Storage buffer | 0.01M PBS, pH 7.4, 50% Glycerol, 0.05% Proclin 300. |
| Clonality | Polyclonal |
| Isotype | IgG |
| Applications | ELISA, IHC, WB |
| Target | Structural polyprotein, p130, Capsid protein, 3.4.21.90, Coat protein, C, Precursor of protein E3/E2, p62, pE2, Assembly protein E3, Spike glycoprotein E2, E2 envelope glycoprotein, 6K protein, Spike glycoprotein E1, E1 envelope glycoprotein |
| Purification | Purified by antigen affinity column. |
| Accession | P13897 |
| Stability and Storage | Use a manual defrost freezer and avoid repeated freeze thaw cycles. Store at 2 to 8°C for frequent use. Store at -20 to -80°C for twelve months from the date of receipt. |

Note

For research use only.

Data Image



Recombinant Protein lysates were subjected to SDS PAGE followed by western blot with Spike glycoprotein E1 antibody (PVV34402) at 1 µg/ml.

Lane 1: Recombinant Protein

Second Ab: Goat Anti-Rabbit IgG H&L Polyclonal antibody, HRP (PTB96431) at 0.1 µg/mL.

Predict MW: 45 kDa

Observed MW: 45 kDa