

# Anti-DENV-2 Envelope protein E Polyclonal Antibody

## Summary

---

<b>Catalog No.</b>	PVV19906
<b>Host species</b>	Rabbit
<b>Tested applications</b>	ELISA: 1:4000-1:8000, WB: 1:1000-1:4000
<b>Species reactivity</b>	Dengue virus type 2 (strain Thailand/16681/1984) (DENV-2)
<b>Immunogen</b>	E. coli - derived recombinant DENV-2 Envelope protein E (Met281-Ala722).
<b>Form</b>	Liquid
<b>Storage buffer</b>	0.01M PBS, pH 7.4, 50% Glycerol, 0.05% Proclin 300.
<b>Clonality</b>	Polyclonal
<b>Isotype</b>	IgG
<b>Applications</b>	ELISA, IHC, WB
<b>Target</b>	Genome polyprotein, Capsid protein C, Core protein, Protein prM, Peptide pr, Small envelope protein M, Matrix protein, Envelope protein E, Non-structural protein 1, NS1, Non-structural protein 2A, NS2A, Serine protease subunit NS2B, Flavivirin protease NS2B regulatory subunit, Non-structural protein 2B, Serine protease NS3, 3.4.21.91, 3.6.1.15, 3.6.4.13, Flavivirin protease NS3 catalytic subunit, Non-structural protein 3, Non-structural protein 4A, NS4A, Peptide 2k, Non-structural protein 4B, NS4B, RNA-directed RNA polymerase NS5, 2.1.1.56, 2.1.1.57, 2.7.7.48, Non-structural protein 5
<b>Purification</b>	Purified by antigen affinity column.

## Recombinant Proteins &amp; Antibodies

**Accession** P29990**Stability and Storage**

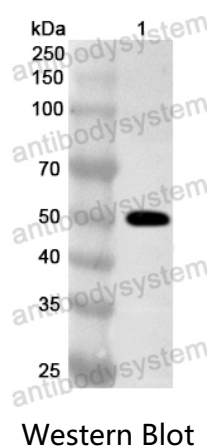
Use a manual defrost freezer and avoid repeated freeze thaw cycles. Store at 2 to 8°C for frequent use. Store at -20 to -80°C for twelve months from the date of receipt.

**Note**

For research use only.

## Data Image

---



Recombinant Protein lysates were subjected to SDS PAGE followed by western blot with Envelope protein E antibody (PVV19906) at 1 µg/ml.

Lane 1: Recombinant Protein

Second Ab: Goat Anti-Rabbit IgG H&L Polyclonal antibody, HRP (PTB96431) at 0.1 µg/mL.

Predict MW: 51 kDa

Observed MW: 51 kDa