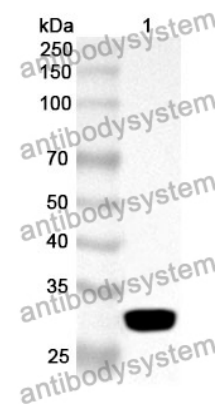


Anti-EGFL7 Polyclonal Antibody

Summary

Catalog No.	PHJ76201
Host species	Rabbit
Tested applications	ELISA: 1:4000-1:8000, IHC: 1:50-1:100, WB: 1:1000-1:4000
Species reactivity	Human
Immunogen	E. coli - derived recombinant Human EGFL7 (Tyr24-Ser273).
Form	Liquid
Storage buffer	0.01M PBS, pH 7.4, 50% Glycerol, 0.05% Proclin 300.
Clonality	Polyclonal
Isotype	IgG
Applications	ELISA, IHC, WB
Target	NOTCH4-like protein,Zneu1,Multiple EGF-like domains protein 7,Epidermal growth factor-like protein 7,MEGF7,EGFL7,VE-statin,EGF-like protein 7,Multiple epidermal growth factor-like domains protein 7,Vascular endothelial statin
Purification	Purified by antigen affinity column.
Accession	Q9UHF1
Stability and Storage	Use a manual defrost freezer and avoid repeated freeze thaw cycles. Store at 2 to 8°C for frequent use. Store at -20 to -80°C for twelve months from the date of receipt.
Note	For research use only.

Data Image



WESTERN BLOT

Recombinant Protein lysates were subjected to SDS PAGE followed by western blot with EGFL7 antibody (PHJ76201) at 1 μ g/ml.

Lane 1: Recombinant protein

Second Ab: Goat Anti-Rabbit IgG H&L Polyclonal antibody, HRP (PTB96431) at 0.1 μ g/mL.

Predict MW: 29 kDa

Observed MW: 29 kDa