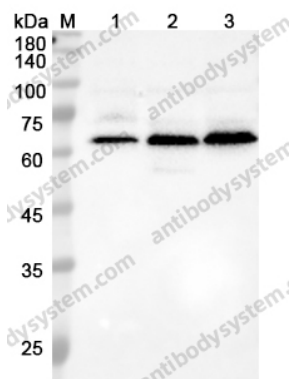


Anti-EBF1 Polyclonal Antibody

Summary

Catalog No.	PHJ75401
Host species	Rabbit
Tested applications	ELISA: 1:4000-1:8000, IHC: 1:50-1:100, WB: 1:1000-1:4000
Species reactivity	Human, Mouse, Rat
Immunogen	E. coli - derived recombinant Human EBF1 (Asp179-Ser451).
Form	Liquid
Storage buffer	0.01M PBS, pH 7.4, 50% Glycerol, 0.05% Proclin 300.
Clonality	Polyclonal
Isotype	IgG
Applications	ELISA, IHC, WB
Target	EBF,EBF1,OE-1,COE1,Early B-cell factor,Transcription factor COE1,O/E-1
Purification	Purified by antigen affinity column.
Accession	Q9UH73
Stability and Storage	Use a manual defrost freezer and avoid repeated freeze thaw cycles. Store at 2 to 8°C for frequent use. Store at -20 to -80°C for twelve months from the date of receipt.
Note	For research use only.

Data Image



Western blot

Various lysates were subjected to SDS PAGE followed by western blot with EBF1 antibody (PHJ75401) at 0.42 µg/ml.

Lane 1: Raji cell lysate

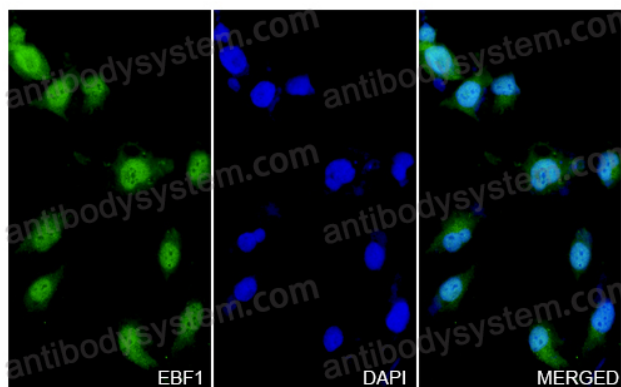
Lane 2: THP-1 cell lysate

Lane 3: K562 cell lysate

Second Ab: Goat Anti-Rabbit IgG H&L Polyclonal antibody, HRP (PTB96431) at 0.1 µg/mL.

Predict MW: 64 kDa

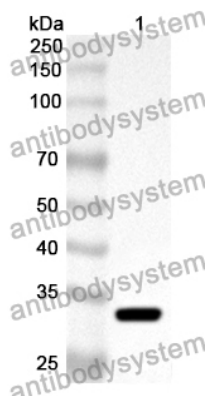
Observed MW: 64 kDa



Immunocytochemistry/ Immunofluorescence

EBF1 in LX-2 Cell Line.

The LX-2 cells were fixed with 4% paraformaldehyde (20 min), and then blocked with 5% goat serum for 1h. And the cells were incubated for 2h at 37°C with EBF1 (PHJ75401) at 8.4 µg/ml. The section was then incubated with Goat Anti-Rabbit IgG (Alexa Fluor-488) preabsorbed at 1/100 dilution (Shown in green) for 1 hour at room temperature. Nuclear DNA was labelled with DAPI (shown in blue).



Western Blot

Recombinant Protein lysates were subjected to SDS PAGE followed by western blot with EBF1 antibody (PHJ75401) at 1 µg/ml.

Lane 1: Recombinant Protein

Second Ab: Goat Anti-Rabbit IgG H&L Polyclonal antibody, HRP (PTB96431) at 0.1 µg/mL.

Predict MW: 33 kDa

Observed MW: 33 kDa