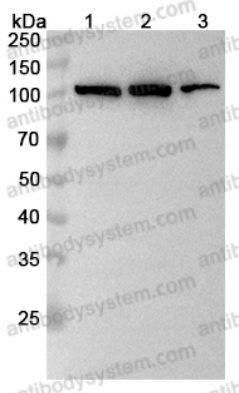


Anti-ABCB6 Polyclonal Antibody

Summary

Catalog No.	PHJ61801
Host species	Rabbit
Tested applications	ELISA: 1:4000-1:8000, IHC: 1:50-1:100, WB: 1:1000-1:4000
Species reactivity	Human, Mouse, Rat
Immunogen	E. coli - derived recombinant Human ABCB6 (Ile590-Arg842).
Form	Liquid
Storage buffer	0.01M PBS, pH 7.4, 50% Glycerol, 0.05% Proclin 300.
Clonality	Polyclonal
Isotype	IgG
Applications	ELISA, IHC, WB
Target	UMAT,ATP-binding cassette sub-family B member 6,mitochondrial,MTABC3,Mitochondrial ABC transporter 3,ABCB6,P-glycoprotein-related protein,Mt-ABC transporter 3,PRP,Ubiquitously-expressed mammalian ABC half transporter
Purification	Purified by antigen affinity column.
Accession	Q9NP58
Stability and Storage	Use a manual defrost freezer and avoid repeated freeze thaw cycles. Store at 2 to 8°C for frequent use. Store at -20 to -80°C for twelve months from the date of receipt.
Note	For research use only.

Data Image



Western Blot

Various lysates were subjected to SDS PAGE followed by western blot with ABCB6 antibody (PHJ61801) at 1 μ g/ml.

Lane 1: HeLa cell lysate

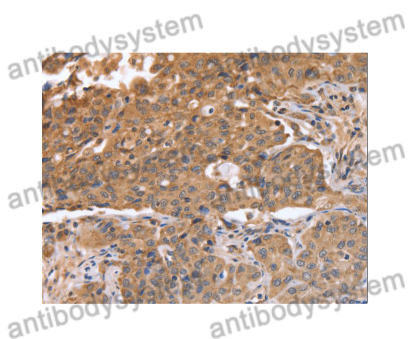
Lane 2: HepG2 cell lysate

Lane 3: HL60 cell lysate

Second Ab: Goat Anti-Rabbit IgG H&L Polyclonal antibody, HRP (PTB96431) at 0.1 μ g/mL.

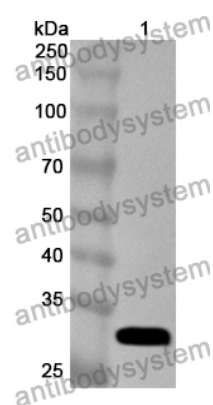
Predict MW: 94 kDa

Observed MW: 100 kDa



Immunohistochemical

Immunohistochemical analysis of Human lung cancer tissue stained for ABCB6 with PHJ61801.



Western Blot

Recombinant Protein lysates were subjected to SDS PAGE followed by western blot with ABCB6 antibody (PHJ61801) at 1 μ g/ml.

Lane 1: Recombinant Protein

Second Ab: Goat Anti-Rabbit IgG H&L Polyclonal antibody, HRP (PTB96431) at 0.1 μ g/mL.

Predict MW: 30 kDa

Observed MW: 30 kDa