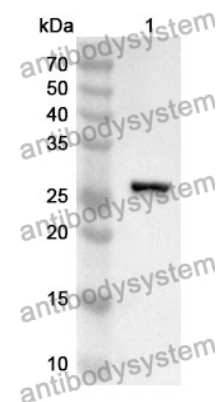


Anti-PTGES2 Polyclonal Antibody

Summary

Catalog No.	PHJ57901
Host species	Rabbit
Tested applications	ELISA: 1:4000-1:8000, IHC: 1:50-1:100, WB: 1:1000-1:4000
Species reactivity	Human, Mouse, Rat
Immunogen	E. coli - derived recombinant Human PTGES2 (Tyr145-Thr357).
Form	Liquid
Storage buffer	0.01M PBS, pH 7.4, 50% Glycerol, 0.05% Proclin 300.
Clonality	Polyclonal
Isotype	IgG
Applications	ELISA, IHC, WB
Target	Microsomal prostaglandin E synthase 2,PGES2,Membrane-associated prostaglandin E synthase-2,Prostaglandin E synthase 2,Prostaglandin-H(2) E-isomerase,C9orf15,mPGES-2,mPGE synthase-2,PTGES2
Purification	Purified by antigen affinity column.
Accession	Q9H7Z7
Stability and Storage	Use a manual defrost freezer and avoid repeated freeze thaw cycles. Store at 2 to 8°C for frequent use. Store at -20 to -80°C for twelve months from the date of receipt.
Note	For research use only.

Data Image



WESTERN BLOT

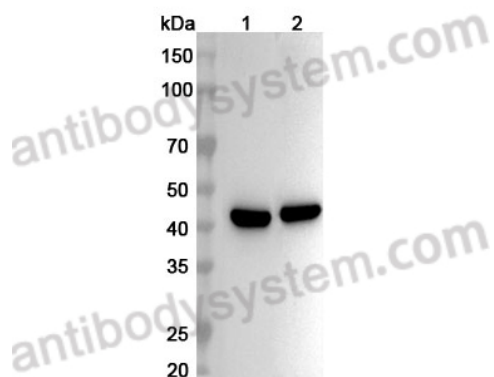
Recombinant Protein lysates were subjected to SDS PAGE followed by western blot with PTGES2 antibody (PHJ57901) at 1 μ g/ml.

Lane 1: Recombinant protein

Second Ab: Goat Anti-Rabbit IgG H&L Polyclonal antibody, HRP (PTB96431) at 0.1 μ g/mL.

Predict MW: 26 kDa

Observed MW: 26 kDa



Western Blot

Various lysates were subjected to SDS PAGE followed by western blot with PTGES2 antibody (PHJ57901) at 1 μ g/ml.

Lane 1: Mouse heart lysate

Lane 2: Rat heart lysate

Second Ab: Goat Anti-Rabbit IgG H&L Polyclonal antibody, HRP (PTB96431) at 0.1 μ g/mL.

Predict MW: 42 kDa

Observed MW: 42 kDa