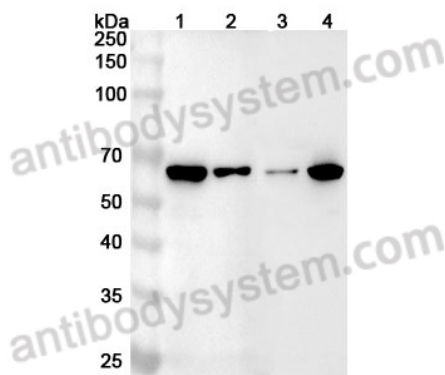


Anti-WAS Polyclonal Antibody

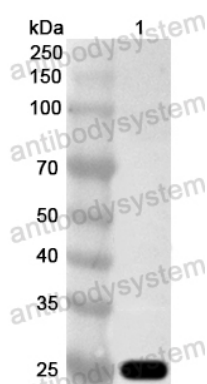
Summary

Catalog No.	PHE37602
Host species	Rabbit
Tested applications	ELISA: 1:4000-1:8000, IHC: 1:50-1:100, WB: 1:1000-1:4000
Species reactivity	Human, Mouse, Rat
Immunogen	E. coli - derived recombinant Human WAS (Leu39-Gly251).
Form	Liquid
Storage buffer	0.01M PBS, pH 7.4, 50% Glycerol, 0.05% Proclin 300.
Clonality	Polyclonal
Isotype	IgG
Applications	ELISA, IHC, WB
Target	Actin nucleation-promoting factor WAS, Wiskott-Aldrich syndrome protein, WASp, WAS, IMD2
Purification	Purified by antigen affinity column.
Accession	P42768
Stability and Storage	Use a manual defrost freezer and avoid repeated freeze thaw cycles. Store at 2 to 8°C for frequent use. Store at -20 to -80°C for twelve months from the date of receipt.
Note	For research use only.

Data Image



WESTERN-BLOT



Western Blot

Various lysates were subjected to SDS PAGE followed by western blot with WAS antibody (PHE37602) at 1 μ g/ml.

Lane 1: Raji cell lysate

Lane 2: HL-60 cell lysate

Lane 3: Jurkat cell lysate

Lane 4: THP-1 cell lysate

Second Ab: Goat Anti-Rabbit IgG H&L Polyclonal antibody, HRP (PTB96431) at 0.1 μ g/mL.

Predict MW: 53 kDa

Observed MW: 62 kDa

Recombinant Protein lysates were subjected to SDS PAGE followed by western blot with WAS antibody (PHE37602) at 1 μ g/ml.

Lane 1: Recombinant Protein

Second Ab: Goat Anti-Rabbit IgG H&L Polyclonal antibody, HRP (PTB96431) at 0.1 μ g/mL.

Predict MW: 25 kDa

Observed MW: 25 kDa