

Recombinant HIV1 GP140 Protein, C-His

Summary

Catalog No.	EVV03101
Alternative Names	Envelope glycoprotein gp160, Env polyprotein, Surface protein gp120, SU, Glycoprotein 120, gp120, Transmembrane protein gp41, TM, Glycoprotein 41, gp41, env
Form	Lyophilized
Storage buffer	Lyophilized from a solution in PBS pH 7.4, 1mM EDTA, 4% Trehalose, 1% Mannitol.
Purity	>90% as determined by SDS-PAGE.
Applications	ELISA, Immunogen, SDS-PAGE, WB, Bioactivity testing in progress
Endotoxin level	Please contact with the lab for this information.
Expression system	Mammalian Cells
Accession	Q78225
Protein length	Met23-Ile680
Nature	Recombinant
Predicted molecular weight	85.10 kDa
Stability and Storage	Use a manual defrost freezer and avoid repeated freeze thaw cycles. Store at 2 to 8°C for frequent use. Store at -20 to -80°C for twelve months from the date of receipt.
Reconstitution	Reconstitute in sterile water for a stock solution. A copy of datasheet will be provided with the products, please refer to it for details.
Species	Human immunodeficiency virus 1

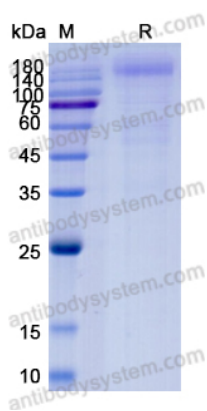
Shipping

In general, proteins are provided as lyophilized powder/frozen liquid. They are shipped out with dry ice/blue ice unless customers require otherwise.

Note

For research use only.

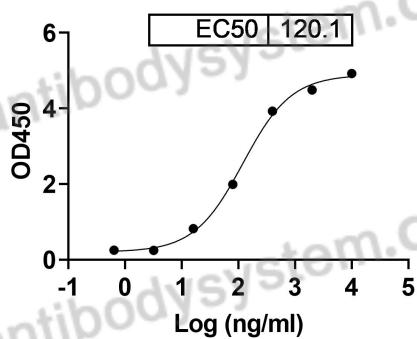
Data Image



SDS-PAGE

SDS-PAGE for Recombinant HIV1 GP140 Protein

Zinlirvimab binds with HIV-1 Envpolypotein

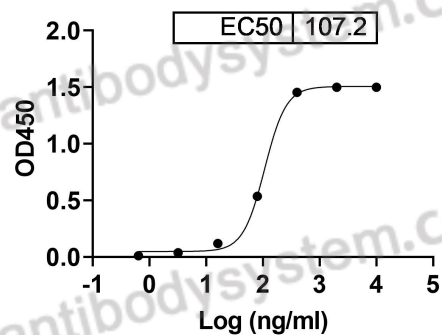


Bioactivity

Detects Zinlirvimab in indirect ELISAs.



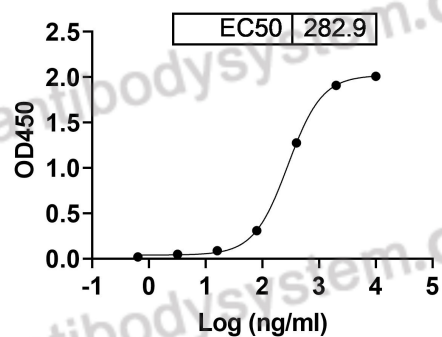
Elipovimab binds with HIV-1 Envpolypotein



Bioactivity

Detects Elipovimab in indirect ELISAs.

Clone: Iv0111 binds with HIV-1 Envpolypotein



Bioactivity

Detects Iv0111 in indirect ELISAs.