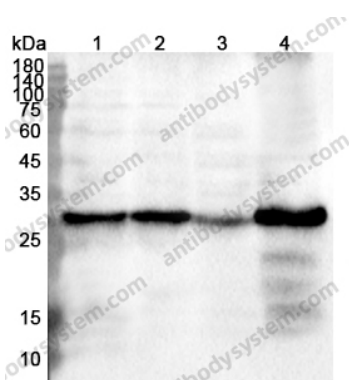


Anti-LXN Polyclonal Antibody

Summary

Catalog No.	PHJ49401
Host species	Rabbit
Tested applications	ELISA: 1:4000-1:8000, IHC: 1:50-1:100, WB: 1:1000-1:4000
Species reactivity	Human, Mouse, Rat
Immunogen	E. coli - derived recombinant Human LXN (Met1-Glu222).
Form	Liquid
Storage buffer	0.01M PBS, pH 7.4, 50% Glycerol, 0.05% Proclin 300.
Clonality	Polyclonal
Isotype	IgG
Applications	ELISA, IHC, WB
Target	Latexin, Tissue carboxypeptidase inhibitor, LXN, Endogenous carboxypeptidase inhibitor, TCI, ECI, Protein MUM
Purification	Purified by antigen affinity column.
Accession	Q9BS40
Stability and Storage	Use a manual defrost freezer and avoid repeated freeze thaw cycles. Store at 2 to 8°C for frequent use. Store at -20 to -80°C for twelve months from the date of receipt.
Note	For research use only.

Data Image



Western blot

Various lysates were subjected to SDS PAGE followed by western blot with LXN antibody (PHJ49401) at 0.6µg/ml.

Lane 1: A549 cell lysate

Lane 2: U87MG cell lysate

Lane 3: A2780 cell lysate

Lane 4: PANC1 cell lysate

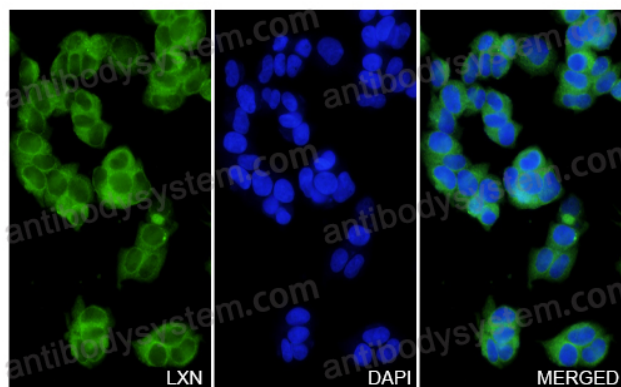
Second Ab: Goat Anti-Rabbit IgG H&L Polyclonal antibody, HRP (PTB96431) at 0.1 µg/mL.

Predict MW: 25 kDa

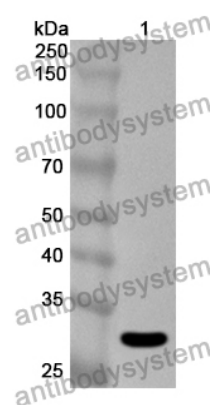
Observed MW: 30 kDa

LXN in A2780 Cell Line.

The A2780 cells were fixed with 4% paraformaldehyde (20 min), and then blocked with 5% goat serum for 1h. And the cells were incubated for 2h at 37°C with LXN (PHJ49401) at 12 µg/ml. The section was then incubated with Goat Anti-Rabbit IgG (Alexa Fluor-488) preabsorbed at 1/100 dilution (Shown in green) for 1 hour at room temperature. Nuclear DNA was labelled with DAPI (shown in blue).



Immunocytochemistry/ Immunofluorescence



Western Blot

Recombinant Protein lysates were subjected to SDS PAGE followed by western blot with LXN antibody (PHJ49401) at 1 μ g/ml.

Lane 1: Recombinant Protein

Second Ab: Goat Anti-Rabbit IgG H&L Polyclonal antibody, HRP (PTB96431) at 0.1 μ g/mL.

Predict MW: 28 kDa

Observed MW: 28 kDa