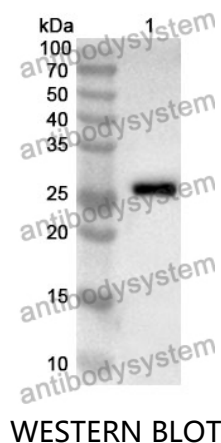


Anti-EPYC Polyclonal Antibody

Summary

Catalog No.	PHJ45401
Host species	Rabbit
Tested applications	ELISA: 1:4000-1:8000, IHC: 1:50-1:100, WB: 1:1000-1:4000
Species reactivity	Human, Mouse, Rat
Immunogen	E. coli - derived recombinant Human EPYC (His110-Pro317).
Form	Liquid
Storage buffer	0.01M PBS, pH 7.4, 50% Glycerol, 0.05% Proclin 300.
Clonality	Polyclonal
Isotype	IgG
Applications	ELISA, IHC, WB
Target	DSPG3,SLRR3B,Proteoglycan-Lb,Small chondroitin/dermatan sulfate proteoglycan,Epiphycan,EPYC,PG-Lb,PGLB,Dermatan sulfate proteoglycan 3
Purification	Purified by antigen affinity column.
Accession	Q99645
Stability and Storage	Use a manual defrost freezer and avoid repeated freeze thaw cycles. Store at 2 to 8°C for frequent use. Store at -20 to -80°C for twelve months from the date of receipt.
Note	For research use only.

Data Image



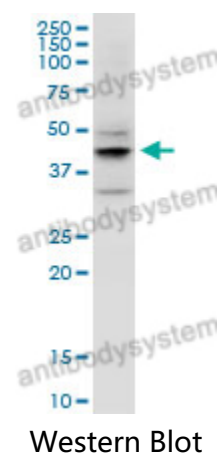
Recombinant Protein lysates were subjected to SDS PAGE followed by western blot with EPYC antibody (PHJ45401) at 1 µg/ml.

Lane 1: Recombinant protein

Second Ab: Goat Anti-Rabbit IgG H&L Polyclonal antibody, HRP (PTB96431) at 0.1 µg/mL.

Predict MW: 27 kDa

Observed MW: 27 kDa



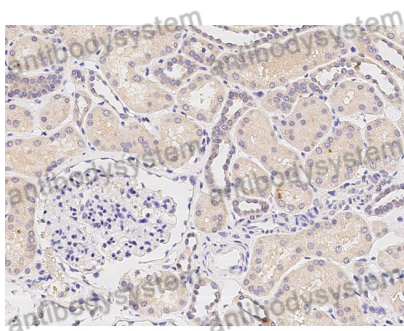
Various lysates were subjected to SDS PAGE followed by western blot with EPYC antibody (PHJ45401) at 1 µg/ml.

Lane 1: MCF7

Second Ab: Goat Anti-Rabbit IgG H&L Polyclonal antibody, HRP (PTB96431) at 0.1 µg/mL.

Predict MW: 36 kDa

Observed MW: 43 kDa



Immunohistochemical analysis of human kidney stained for EPYC with PHJ45401.

Immunohistochemical