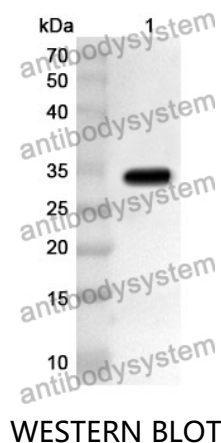


Anti-NEIL1 Polyclonal Antibody

Summary

| | |
|------------------------------|--|
| Catalog No. | PHJ39201 |
| Host species | Rabbit |
| Tested applications | ELISA: 1:4000-1:8000, IHC: 1:50-1:100, WB: 1:1000-1:4000 |
| Species reactivity | Human |
| Immunogen | E. coli - derived recombinant Human NEIL1 (Ser43-Ala314). |
| Form | Liquid |
| Storage buffer | 0.01M PBS, pH 7.4, 50% Glycerol, 0.05% Proclin 300. |
| Clonality | Polyclonal |
| Isotype | IgG |
| Applications | ELISA, IHC, WB |
| Target | Endonuclease 8-like 1,DNA glycosylase/AP lyase Neil1,Endonuclease VIII-like 1,Nei-like protein 1,DNA-(apurinic or apyrimidinic site) lyase Neil1,Nei homolog 1,NEIL1,FPG1,NEH1 |
| Purification | Purified by antigen affinity column. |
| Accession | Q96FI4 |
| Stability and Storage | Use a manual defrost freezer and avoid repeated freeze thaw cycles. Store at 2 to 8°C for frequent use. Store at -20 to -80°C for twelve months from the date of receipt. |
| Note | For research use only. |

Data Image



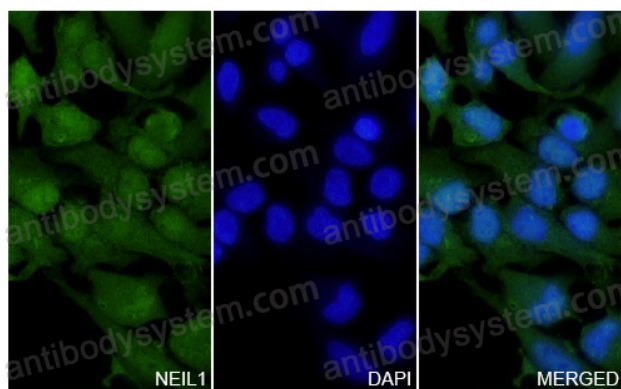
Recombinant Protein lysates were subjected to SDS PAGE followed by western blot with NEIL1 antibody (PHJ39201) at 1 µg/ml.

Lane 1: Recombinant protein

Second Ab: Goat Anti-Rabbit IgG H&L Polyclonal antibody, HRP (PTB96431) at 0.1 µg/mL.

Predict MW: 33 kDa

Observed MW: 33 kDa



Immunocytochemistry/ Immunofluorescence

NEIL1 in HeLa Cell Line.

The HeLa cells were fixed with 4% paraformaldehyde (20 min), and then blocked with 5% goat serum for 1h. And the cells were incubated for 2h at 37°C with NEIL1 (PHJ39201) at 17.8 µg/ml. The section was then incubated with Goat Anti-Rabbit IgG (Alexa Fluor-488) preabsorbed at 1/100 dilution (Shown in green) for 1 hour at room temperature. Nuclear DNA was labelled with DAPI (shown in blue).