

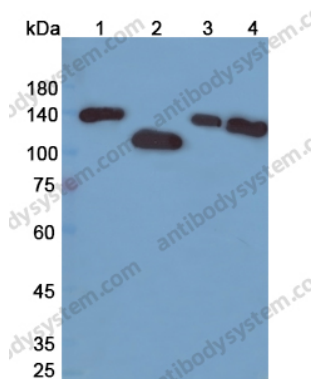
# Anti-SIRT1 Polyclonal Antibody

## Summary

---

<b>Catalog No.</b>	PHJ38701
<b>Host species</b>	Rabbit
<b>Tested applications</b>	ELISA: 1:4000-1:8000, IHC: 1:50-1:100, WB: 1:1000-1:4000
<b>Species reactivity</b>	Human, Mouse, Rat
<b>Immunogen</b>	E. coli - derived recombinant Human SIRT1 (Ile194-Ser747).
<b>Form</b>	Liquid
<b>Storage buffer</b>	0.01M PBS, pH 7.4, 50% Glycerol, 0.05% Proclin 300.
<b>Concentration</b>	0.33 mg/ml
<b>Clonality</b>	Polyclonal
<b>Isotype</b>	IgG
<b>Applications</b>	ELISA, IHC, WB
<b>Target</b>	NAD-dependent protein deacylase sirtuin-1,hSIR2,NAD-dependent protein deacetylase sirtuin-1,SIR2-like protein 1,75SirT1,SIR2L1,Regulatory protein SIR2 homolog 1,SIRT1,hSIRT1
<b>Purification</b>	Purified by antigen affinity column.
<b>Accession</b>	Q96EB6
<b>Stability and Storage</b>	Use a manual defrost freezer and avoid repeated freeze thaw cycles. Store at 2 to 8°C for frequent use. Store at -20 to -80°C for twelve months from the date of receipt.
<b>Note</b>	For research use only.

## Data Image



Western blot

Various lysates were subjected to SDS PAGE followed by western blot with SIRT1 antibody (PHJ38701) at 0.33 $\mu$ g/ml.

Lane 1: Hela cell lysate

Lane 2: Rat testis lysate

Lane 3: K562 cell lysate

Lane 4: 293T cell lysate

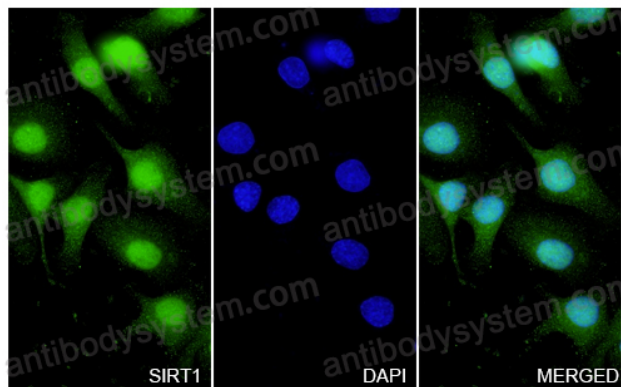
Second Ab: Goat Anti-Rabbit IgG H&L Polyclonal antibody, HRP (PTB96431) at 0.1  $\mu$ g/mL.

Predict MW: 81 kDa

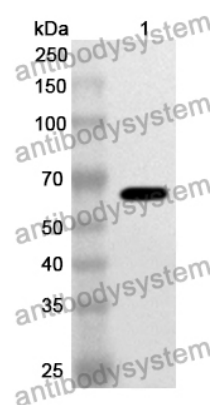
Observed MW: 100-140 kDa

SIRT1 in SKOV3 Cell Line.

The SKOV3 cells were fixed with 4% paraformaldehyde (20 min), and then blocked with 5% goat serum for 1h. And the cells were incubated for 2h at 37°C with SIRT1 (PHJ38701) at 6.6  $\mu$ g/ml. The section was then incubated with Goat Anti-Rabbit IgG (Alexa Fluor-488) preabsorbed at 1/100 dilution (Shown in green) for 1 hour at room temperature. Nuclear DNA was labelled with DAPI (shown in blue).



Immunocytochemistry/ Immunofluorescence



Western Blot

Recombinant Protein lysates were subjected to SDS PAGE followed by western blot with SIRT1 antibody (PHJ38701) at 1  $\mu$ g/ml.

Lane 1: Recombinant Protein

Second Ab: Goat Anti-Rabbit IgG H&L Polyclonal antibody, HRP (PTB96431) at 0.1  $\mu$ g/mL.

Predict MW: 64 kDa

Observed MW: 64 kDa